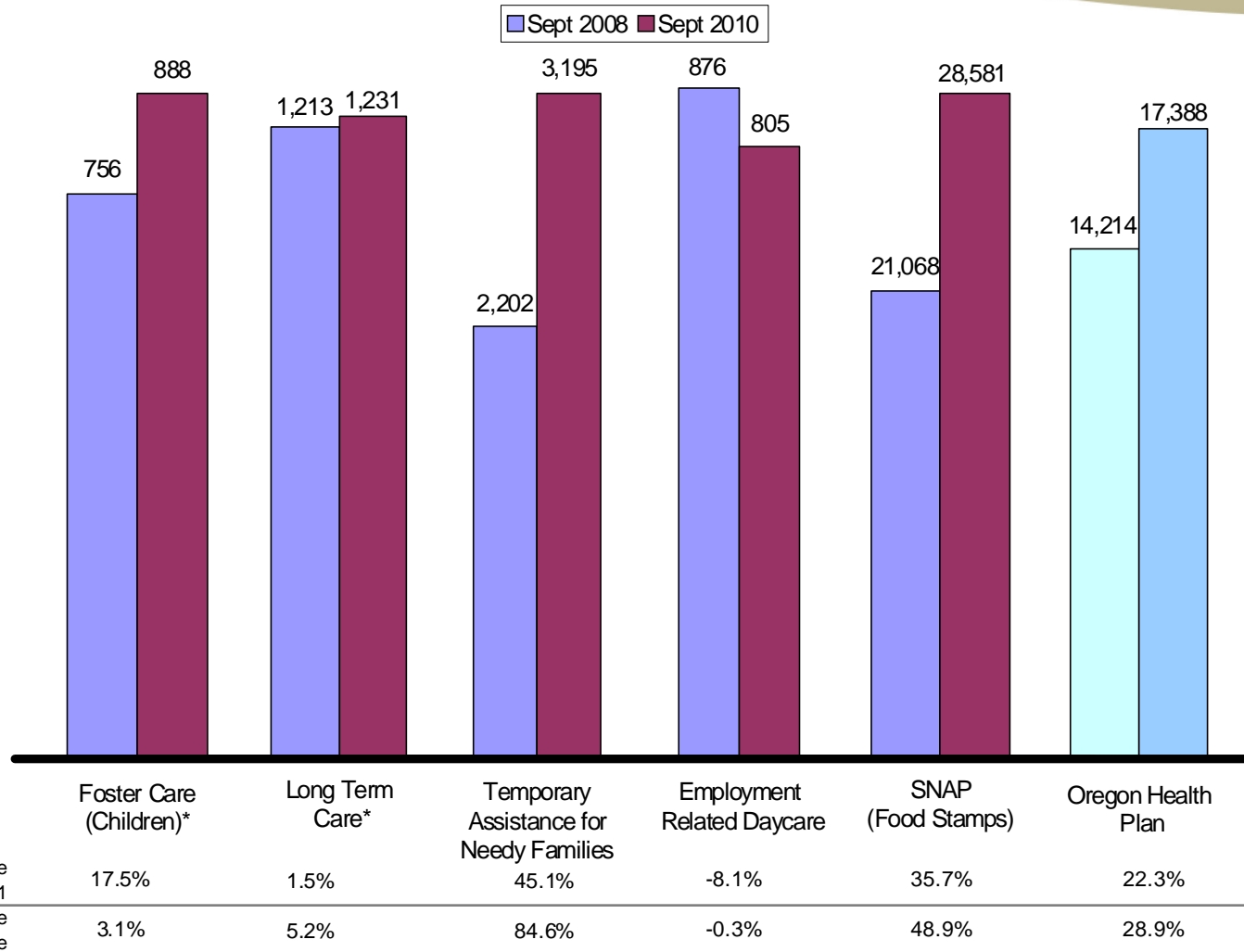
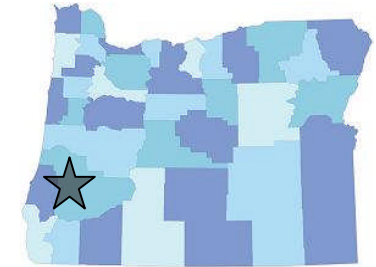


DHS & OHA Caseloads

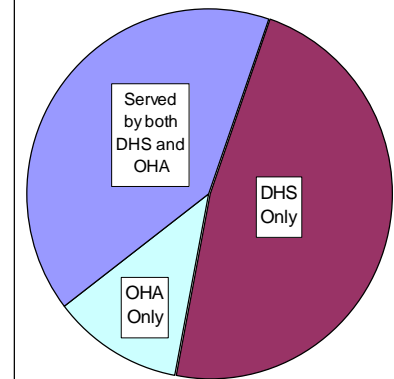
Senate District 1

Senator
Jeff Kruse



All Eligibility Determinations are Performed by DHS

42% of district clients receive services from both DHS and OHA



District Demographic Information (from 2000 U.S. Census)										
	AGE				RACE*					
	Total Population	Residents Under 18	Residents Under 5	Residents 65 and Over	White	African American	American Indian	Asian	Other	Hispanic (of any race)
Number	113,711	25,983	5,971	22,296	109,344	441	4,247	1,167	1,855	2,656
Percent	100.0%	22.9%	5.3%	19.6%	96.2%	0.4%	3.7%	1.0%	1.6%	2.3%
Statewide Percent		24.7%	6.5%	12.9%	89.2%	2.2%	2.6%	3.6%	5.7%	8.2%

*Total for race may exceed 100% - Includes double-counts for those who indicated more than one race

Source: U.S. Census Bureau, State Legislative District Summary File

States provided updated boundaries in 2005/2006 as part of Phase 1 of the 2010 Census Redistricting Data Program.

*Child Foster Care compares August 2008 to August 2010. Long Term Care compares April 2008 to April 2010

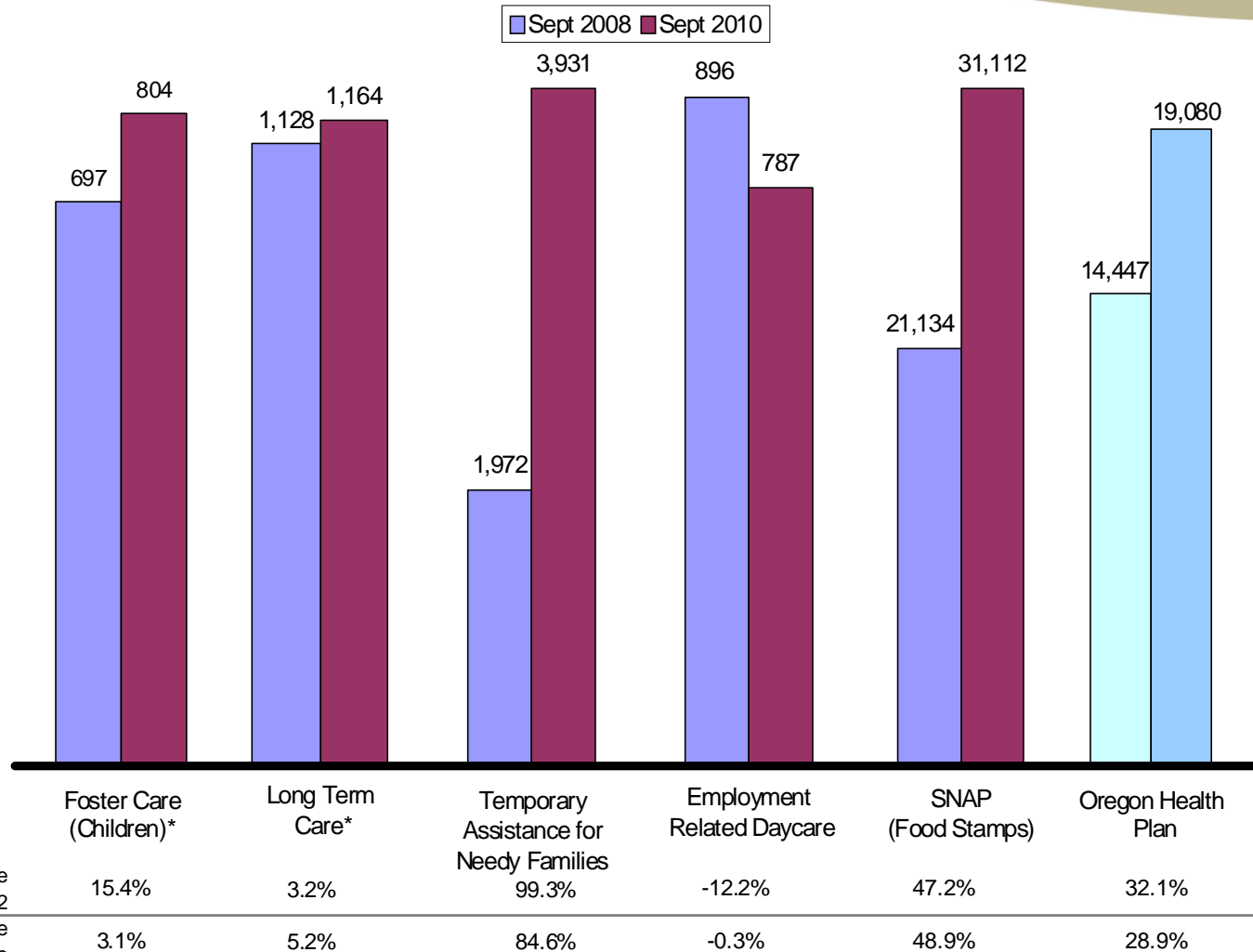
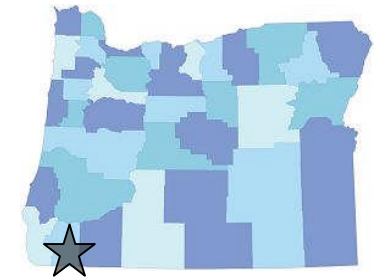
Oregon
Health
Authority

DHS
Oregon Department
of Human Services

DHS & OHA Caseloads

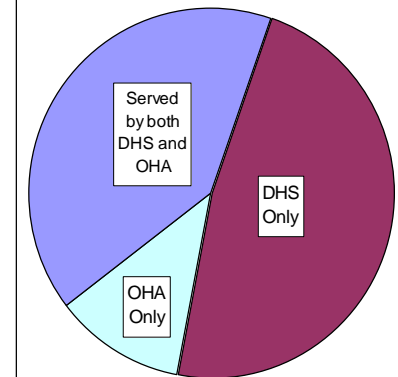
Senate District 2

Senator
Jason Atkinson



All Eligibility Determinations are Performed by DHS

43% of district clients receive services from both DHS and OHA



District Demographic Information (from 2000 U.S. Census)										
AGE					RACE*					
	Total Population	Residents Under 18	Residents Under 5	Residents 65 and Over	White	African American	American Indian	Asian	Other	Hispanic (of any race)
Number	114,438	27,185	6,353	21,355	110,306	493	3,073	1,146	2,590	3,649
Percent	100.0%	23.8%	5.6%	18.7%	96.4%	0.4%	2.7%	1.0%	2.3%	3.2%
Statewide Percent		24.7%	6.5%	12.9%	89.2%	2.2%	2.6%	3.6%	5.7%	8.2%

*Total for race may exceed 100% - Includes double-counts for those who indicated more than one race

Source: U.S. Census Bureau, State Legislative District Summary File

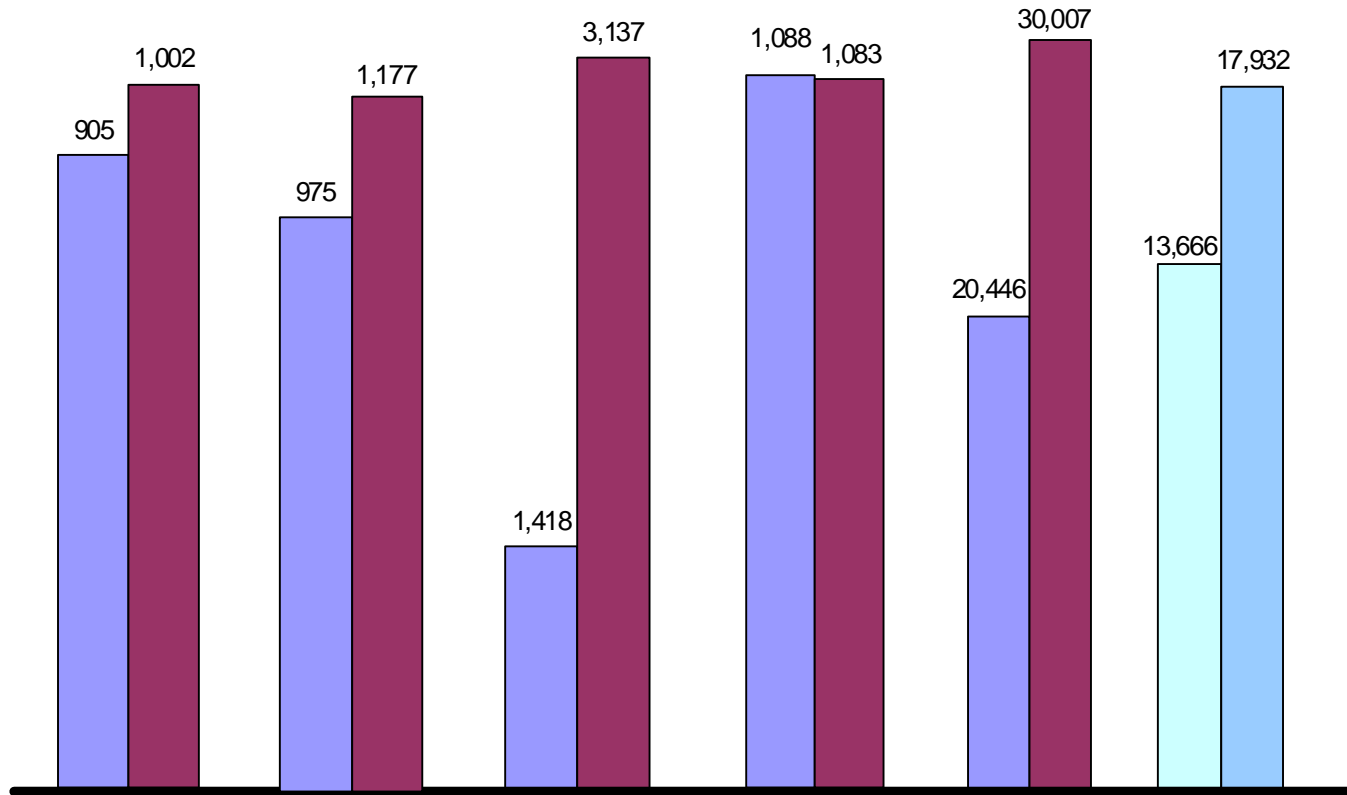
States provided updated boundaries in 2005/2006 as part of Phase 1 of the 2010 Census Redistricting Data Program.

*Child Foster Care compares August 2008 to August 2010. Long Term Care compares April 2008 to April 2010



DHS & OHA Caseloads

■ Sept 2008 ■ Sept 2010



	Foster Care (Children)*	Long Term Care*	Temporary Assistance for Needy Families	Employment Related Daycare	SNAP (Food Stamps)	Oregon Health Plan
% Change SD 3	10.7%	20.7%	121.2%	-0.5%	46.8%	31.2%
% Change Statewide	3.1%	5.2%	84.6%	-0.3%	48.9%	28.9%

District Demographic Information (from 2000 U.S. Census)										
	AGE				RACE*					
	Total Population	Residents Under 18	Residents Under 5	Residents 65 and Over	White	African American	American Indian	Asian	Other	Hispanic (of any race)
Number	114,864	27,133	6,843	19,269	107,630	947	2,561	1,979	5,492	6,796
Percent	100.0%	23.6%	6.0%	16.8%	93.7%	0.8%	2.2%	1.7%	4.8%	5.9%
Statewide Percent		24.7%	6.5%	12.9%	89.2%	2.2%	2.6%	3.6%	5.7%	8.2%

*Total for race may exceed 100% - Includes double-counts for those who indicated more than one race

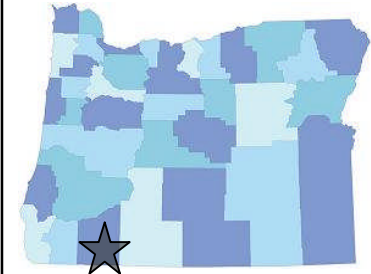
Source: U.S. Census Bureau, State Legislative District Summary File

States provided updated boundaries in 2005/2006 as part of Phase 1 of the 2010 Census Redistricting Data Program.

*Child Foster Care compares August 2008 to August 2010. Long Term Care compares April 2008 to April 2010

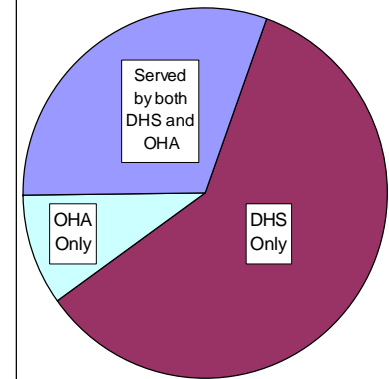
Senate District 3

Senator Alan Bates



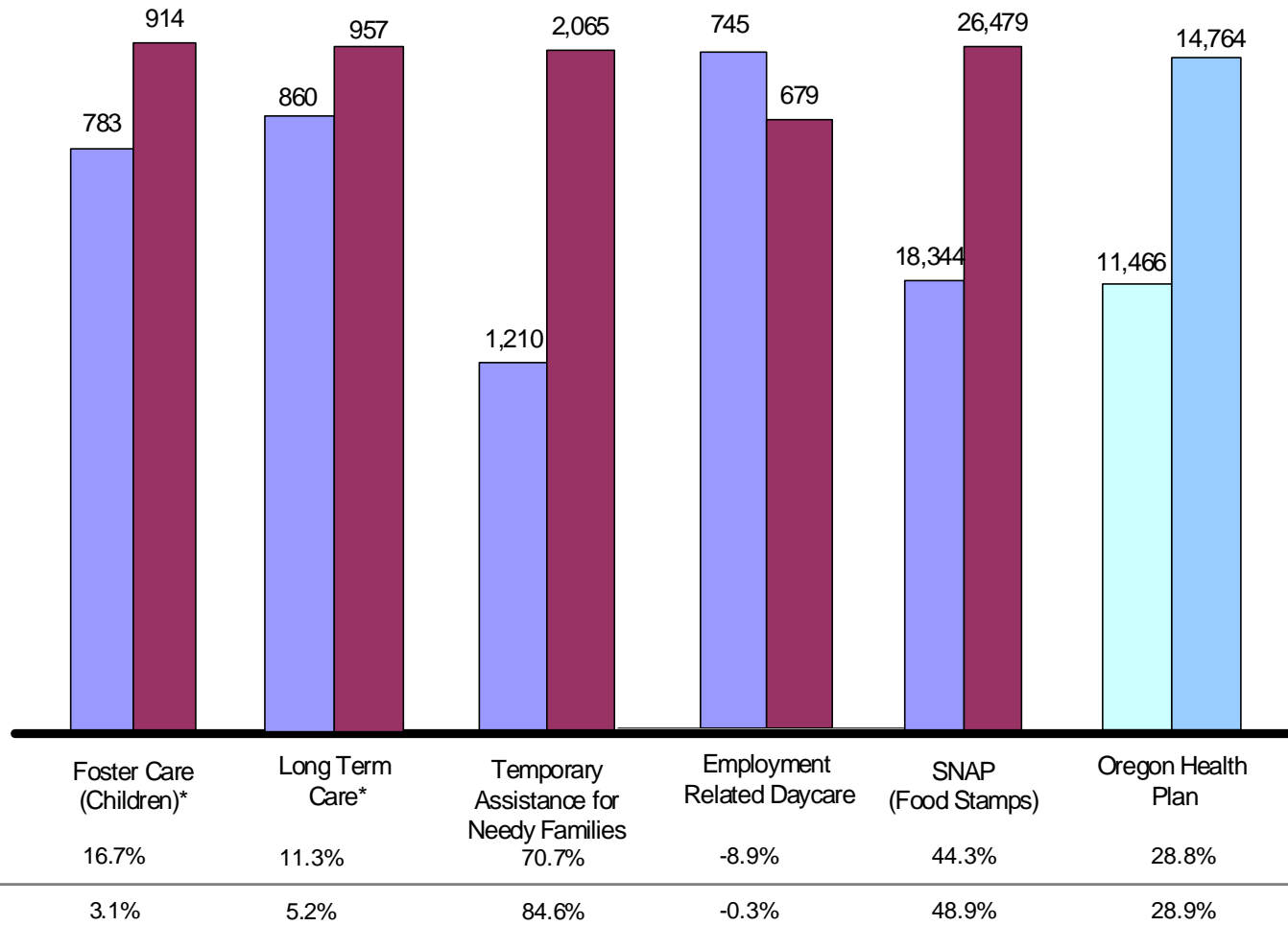
All Eligibility Determinations are Performed by DHS

41% of district clients receive services from both DHS and OHA



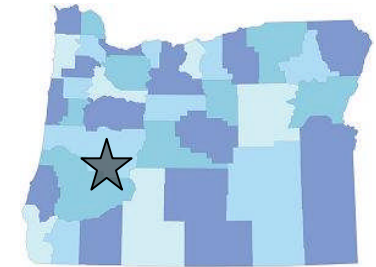
DHS & OHA Caseloads

■ Sept 2008 ■ Sept 2010



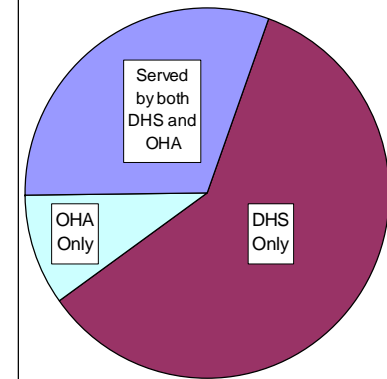
Senate District 4

Senator
Floyd Prozanski



All Eligibility Determinations are Performed by DHS

36% of district clients receive services from both DHS and OHA



District Demographic Information (from 2000 U.S. Census)										
AGE					RACE*					
	Total Population	Residents Under 18	Residents Under 5	Residents 65 and Over	White	African American	American Indian	Asian	Other	Hispanic (of any race)
Number	114,864	27,133	6,843	19,269	107,630	947	2,561	1,979	5,492	6,796
Percent	100.0%	23.6%	6.0%	16.8%	93.7%	0.8%	2.2%	1.7%	4.8%	5.9%
Statewide Percent		24.7%	6.5%	12.9%	89.2%	2.2%	2.6%	3.6%	5.7%	8.2%

*Total for race may exceed 100% - Includes double-counts for those who indicated more than one race

Source: U.S. Census Bureau, State Legislative District Summary File

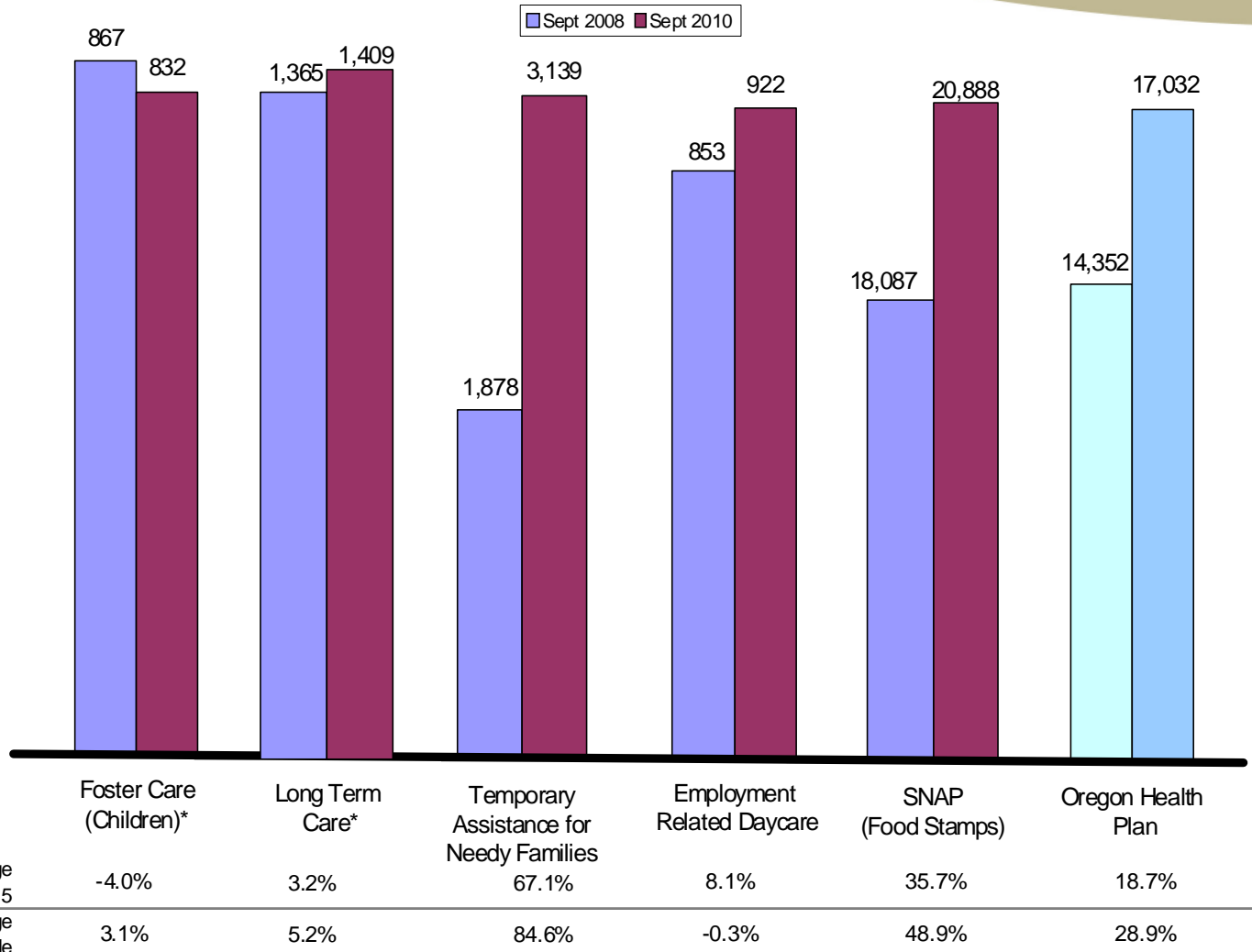
States provided updated boundaries in 2005/2006 as part of Phase 1 of the 2010 Census Redistricting Data Program.

*Child Foster Care compares August 2008 to August 2010. Long Term Care compares April 2008 to April 2010

Oregon Health Authority

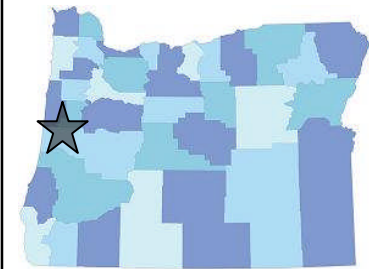
DHS Oregon Department of Human Services

DHS & OHA Caseloads



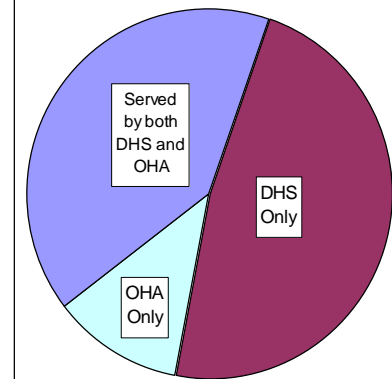
Senate District 5

Senator
Joanne Verger



All Eligibility Determinations are Performed by DHS

42% of district clients receive services from both DHS and OHA



District Demographic Information (from 2000 U.S. Census)										
	AGE				RACE*					
	Total Population	Residents Under 18	Residents Under 5	Residents 65 and Over	White	African American	American Indian	Asian	Other	Hispanic (of any race)
Number	114,139	24,308	5,480	23,391	107,814	621	5,515	1,523	2,400	3,272
Percent	100.0%	21.3%	4.8%	20.5%	94.5%	0.5%	4.8%	1.3%	2.1%	2.9%
Statewide Percent		24.7%	6.5%	12.9%	89.2%	2.2%	2.6%	3.6%	5.7%	8.2%

*Total for race may exceed 100% - Includes double-counts for those who indicated more than one race

Source: U.S. Census Bureau, State Legislative District Summary File

States provided updated boundaries in 2005/2006 as part of Phase 1 of the 2010 Census Redistricting Data Program.

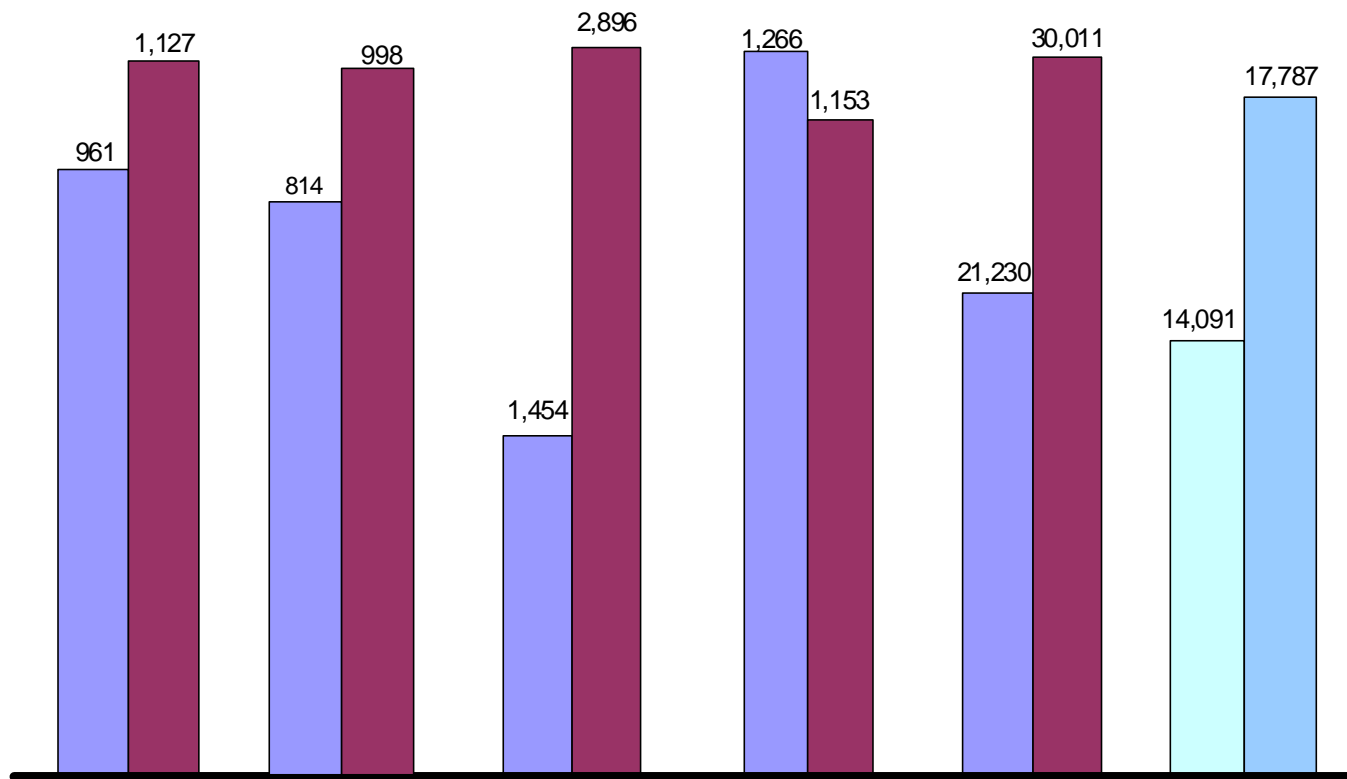
*Child Foster Care compares August 2008 to August 2010. Long Term Care compares April 2008 to April 2010

Oregon Health Authority

DHS Oregon Department of Human Services

DHS & OHA Caseloads

Sept 2008 Sept 2010



% Change SD 6

Service	% Change SD 6	% Change Statewide
Foster Care (Children)*	17.3%	3.1%
Long Term Care*	22.6%	5.2%
Temporary Assistance for Needy Families	99.2%	84.6%
Employment Related Daycare	-8.9%	-0.3%
SNAP (Food Stamps)	41.4%	48.9%
Oregon Health Plan	26.2%	28.9%

% Change Statewide

District Demographic Information (from 2000 U.S. Census)

	AGE				RACE*					
	Total Population	Residents Under 18	Residents Under 5	Residents 65 and Over	White	African American	American Indian	Asian	Other	Hispanic (of any race)
Number	114,233	28,654	7,357	13,962	108,092	1,134	3,245	2,066	3,628	4,144
Percent	100.0%	25.1%	6.4%	12.2%	94.6%	1.0%	2.8%	1.8%	3.2%	3.6%
Statewide Percent		24.7%	6.5%	12.9%	89.2%	2.2%	2.6%	3.6%	5.7%	8.2%

*Total for race may exceed 100% - Includes double-counts for those who indicated more than one race

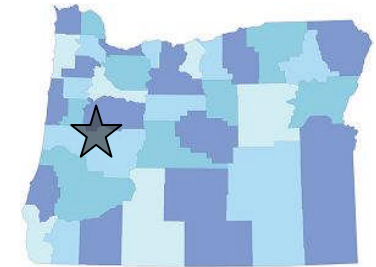
Source: U.S. Census Bureau, State Legislative District Summary File

States provided updated boundaries in 2005/2006 as part of Phase 1 of the 2010 Census Redistricting Data Program.

*Child Foster Care compares August 2008 to August 2010. Long Term Care compares April 2008 to April 2010

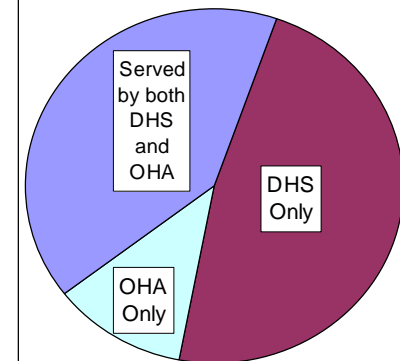
Senate District 6

Senator Lee Beyer



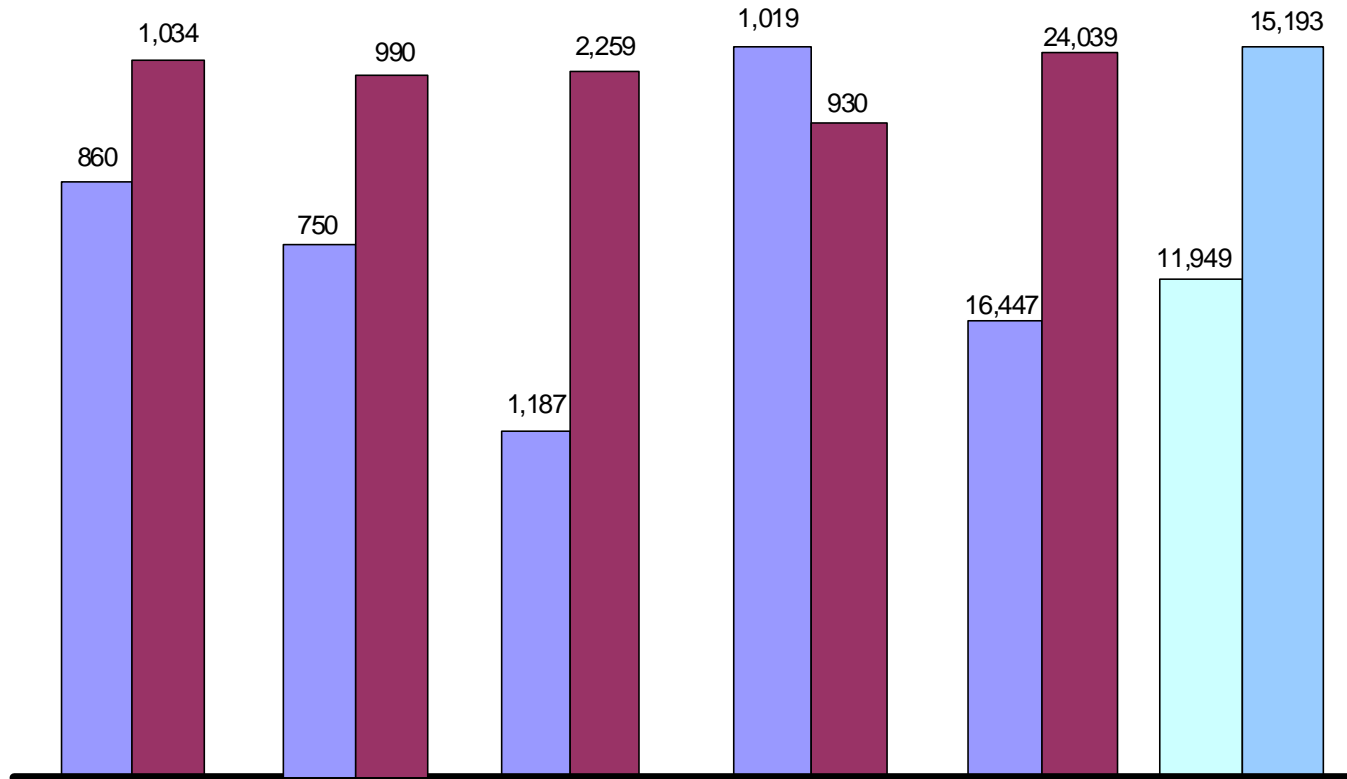
All Eligibility Determinations are Performed by DHS

41% of district clients receive services from both DHS and OHA



DHS & OHA Caseloads

■ Sept 2008 ■ Sept 2010



% Change SD7

Service	% Change SD7
Foster Care (Children)*	20.2%
Long Term Care*	32.0%
Temporary Assistance for Needy Families	90.3%
Employment Related Daycare	-8.7%
SNAP (Food Stamps)	46.2%
Oregon Health Plan	27.1%

% Change Statewide

Service	% Change Statewide
Foster Care (Children)*	3.1%
Long Term Care*	5.2%
Temporary Assistance for Needy Families	84.6%
Employment Related Daycare	-0.3%
SNAP (Food Stamps)	48.9%
Oregon Health Plan	28.9%

District Demographic Information (from 2000 U.S. Census)										
	AGE				RACE*					
	Total Population	Residents Under 18	Residents Under 5	Residents 65 and Over	White	African American	American Indian	Asian	Other	Hispanic (of any race)
Number	114,561	26,826	7,220	14,738	106,207	1,915	2,882	3,494	4,565	4,424
Percent	100.0%	23.4%	6.3%	12.9%	92.7%	1.7%	2.5%	3.0%	4.0%	3.9%
Statewide Percent		24.7%	6.5%	12.9%	89.2%	2.2%	2.6%	3.6%	5.7%	8.2%

*Total for race may exceed 100% - Includes double-counts for those who indicated more than one race

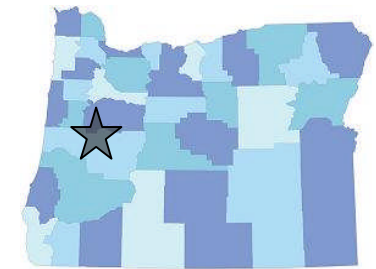
Source: U.S. Census Bureau, State Legislative District Summary File

States provided updated boundaries in 2005/2006 as part of Phase 1 of the 2010 Census Redistricting Data Program.

*Child Foster Care compares August 2008 to August 2010. Long Term Care compares April 2008 to April 2010

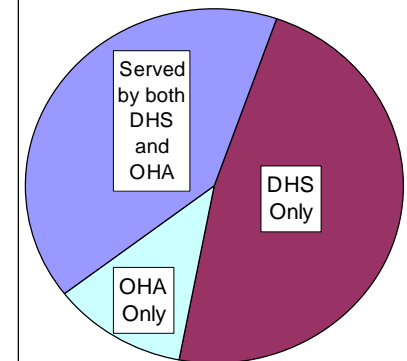
Senate District 7

Senator
Chris Edwards



All Eligibility Determinations are Performed by DHS

41% of district clients receive services from both DHS and OHA



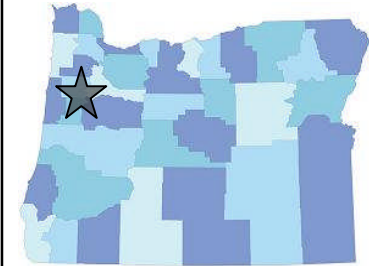
Oregon Health Authority

DHS Oregon Department of Human Services

DHS & OHA Caseloads

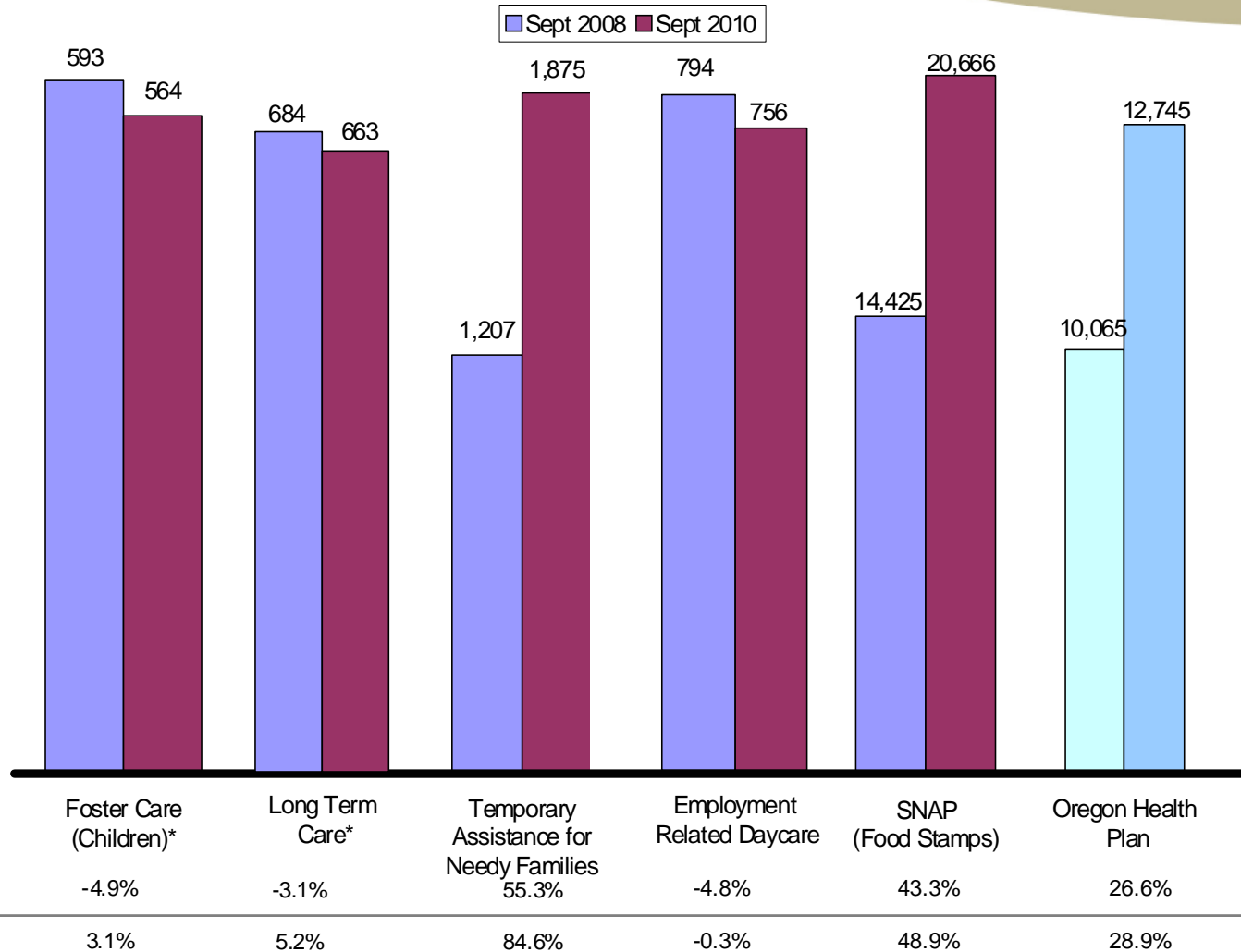
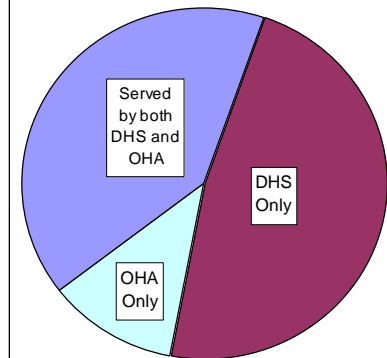
Senate District 8

Senator
Frank Morse



All Eligibility Determinations
are Performed by DHS

42% of district clients
receive services from both
DHS and OHA



District Demographic Information (from 2000 U.S. Census)										
	AGE				RACE*					
	Total Population	Residents Under 18	Residents Under 5	Residents 65 and Over	White	African American	American Indian	Asian	Other	Hispanic (of any race)
Number	114,146	25,833	6,778	13,099	105,173	1,249	2,199	4,820	3,965	4,310
Percent	100.0%	22.6%	5.9%	11.5%	92.1%	1.1%	1.9%	4.2%	3.5%	3.8%
Statewide Percent		24.7%	6.5%	12.9%	89.2%	2.2%	2.6%	3.6%	5.7%	8.2%

*Total for race may exceed 100% - Includes double-counts for those who indicated more than one race

Source: U.S. Census Bureau, State Legislative District Summary File

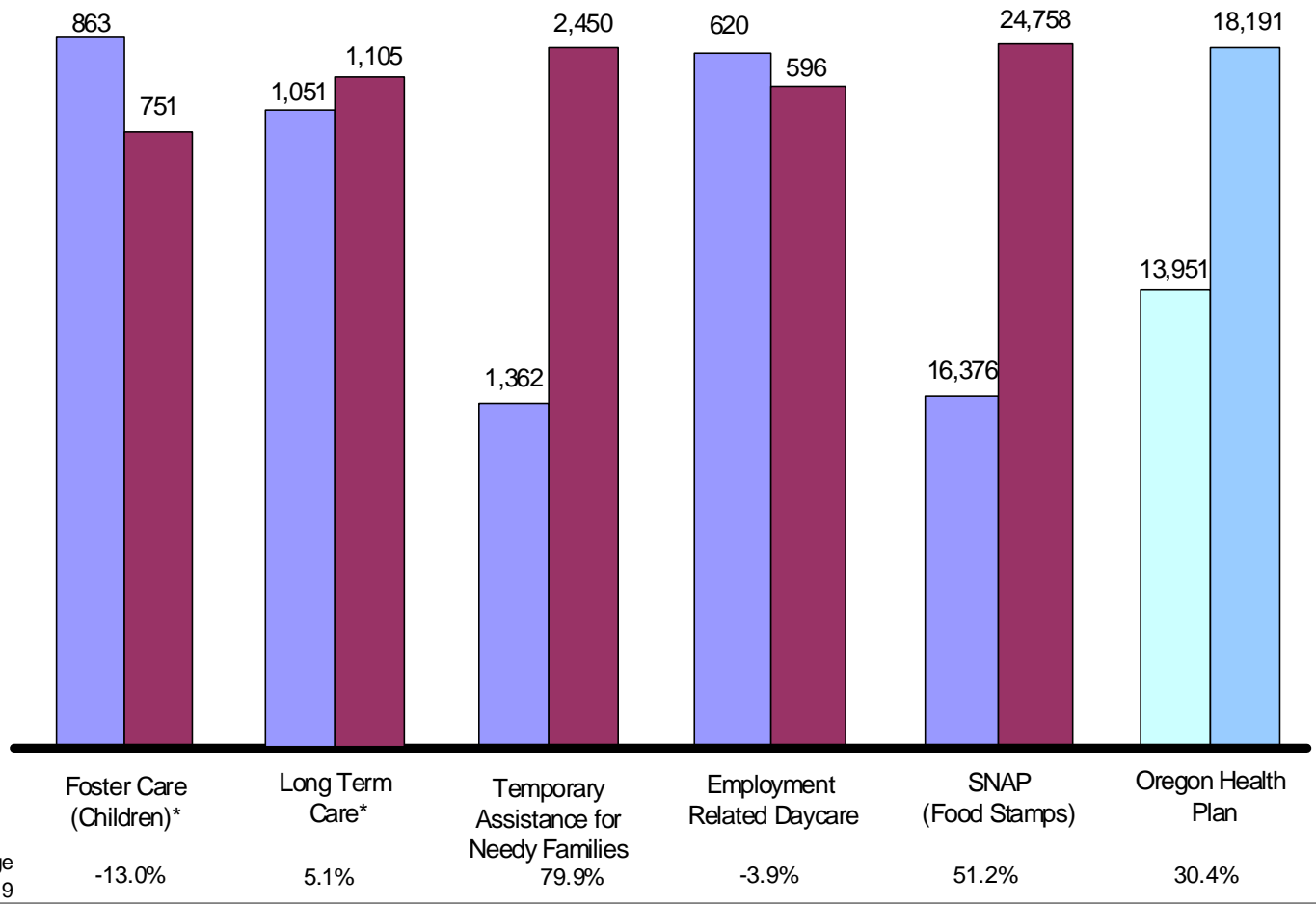
States provided updated boundaries in 2005/2006 as part of Phase 1 of the 2010 Census Redistricting Data Program.

*Child Foster Care compares August 2008 to August 2010. Long Term Care compares April 2008 to April 2010



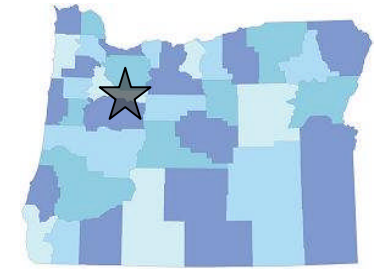
DHS & OHA Caseloads

■ Sept 2008 ■ Sept 2010



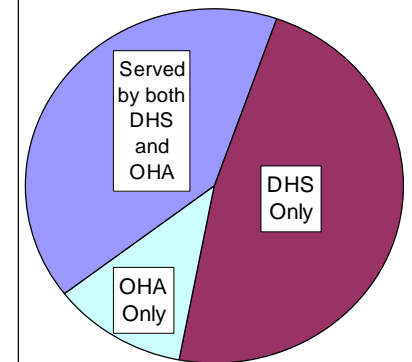
Senate District 9

Senator
Fred Girod



All Eligibility Determinations are Performed by DHS

41% of district clients receive services from both DHS and OHA



District Demographic Information (from 2000 U.S. Census)										
AGE					RACE*					
	Total Population	Residents Under 18	Residents Under 5	Residents 65 and Over	White	African American	American Indian	Asian	Other	Hispanic (of any race)
Number	113,780	31,857	7,695	15,686	106,540	506	2,777	1,114	5,980	6,848
Percent	100.0%	28.0%	6.8%	13.8%	93.6%	0.4%	2.4%	1.0%	5.3%	6.0%
Statewide Percent		24.7%	6.5%	12.9%	89.2%	2.2%	2.6%	3.6%	5.7%	8.2%

*Total for race may exceed 100% - Includes double-counts for those who indicated more than one race

Source: U.S. Census Bureau, State Legislative District Summary File

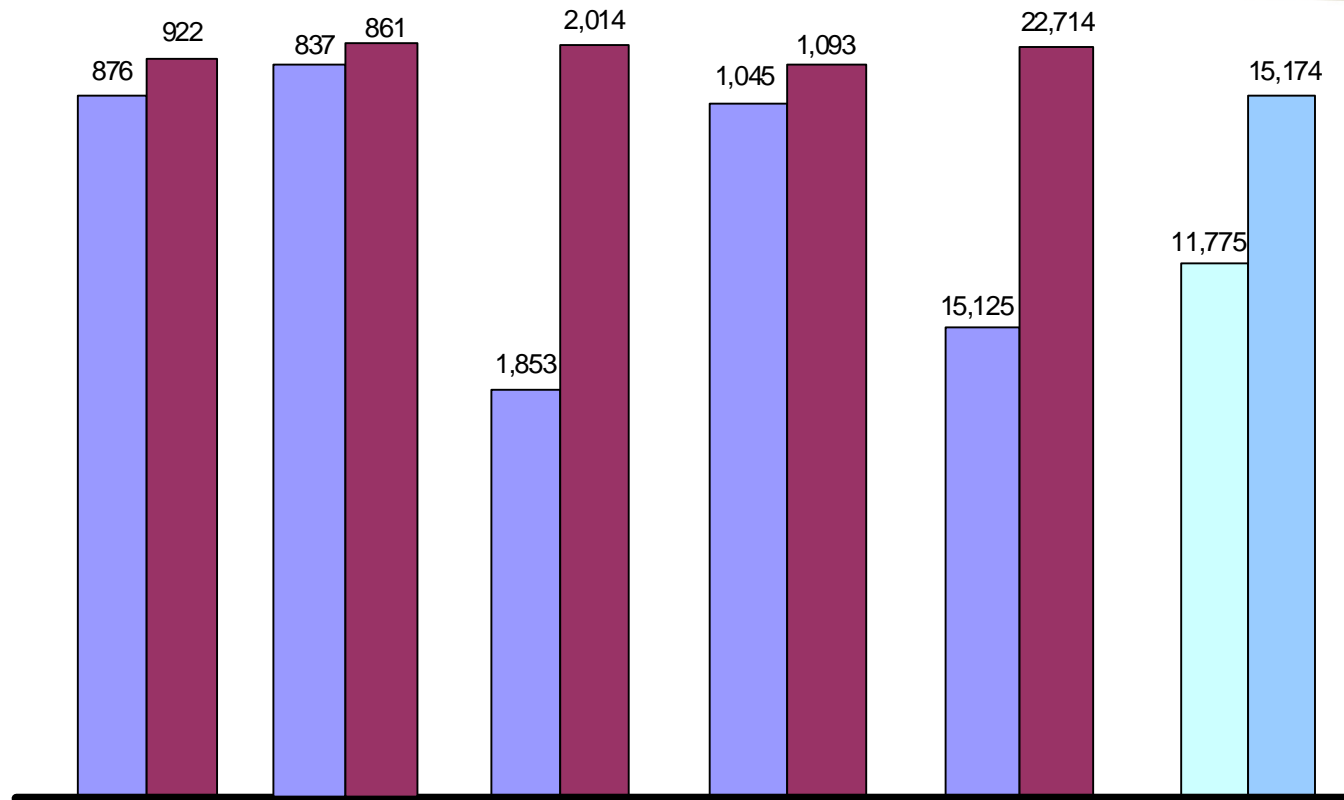
States provided updated boundaries in 2005/2006 as part of Phase 1 of the 2010 Census Redistricting Data Program.

*Child Foster Care compares August 2008 to August 2010. Long Term Care compares April 2008 to April 2010



DHS & OHA Caseloads

■ Sept 2008 ■ Sept 2010



% Change SD 10

Service	% Change SD 10
Foster Care (Children)*	5.3%
Long Term Care*	2.9%
Temporary Assistance for Needy Families	78.3%
Employment Related Daycare	4.6%
SNAP (Food Stamps)	50.2%
Oregon Health Plan	28.9%

% Change Statewide

Service	% Change Statewide
Foster Care (Children)*	3.1%
Long Term Care*	5.2%
Temporary Assistance for Needy Families	84.6%
Employment Related Daycare	-0.3%
SNAP (Food Stamps)	48.9%
Oregon Health Plan	28.9%

District Demographic Information (from 2000 U.S. Census)											
	AGE				RACE*						Hispanic (of any race)
	Total Population	Residents Under 18	Residents Under 5	Residents 65 and Over	White	African American	American Indian	Asian	Other		
Number	113,673	28,218	7,264	14,879	103,414	1,391	2,656	2,868	6,859	7,939	
Percent	100.0%	24.8%	6.4%	13.1%	91.0%	1.2%	2.3%	2.5%	6.0%	7.0%	
Statewide Percent		24.7%	6.5%	12.9%	89.2%	2.2%	2.6%	3.6%	5.7%	8.2%	

*Total for race may exceed 100% - Includes double-counts for those who indicated more than one race

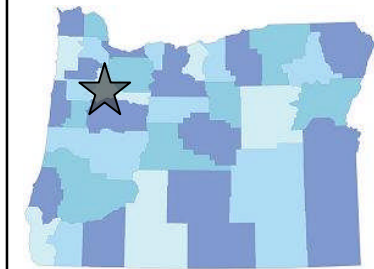
Source: U.S. Census Bureau, State Legislative District Summary File

States provided updated boundaries in 2005/2006 as part of Phase 1 of the 2010 Census Redistricting Data Program.

*Child Foster Care compares August 2008 to August 2010. Long Term Care compares April 2008 to April 2010

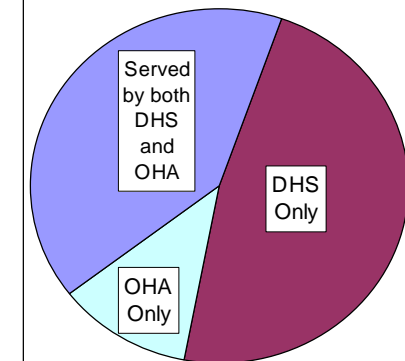
Senate District 10

Senator Jackie Winters



All Eligibility Determinations are Performed by DHS

41% of district clients receive services from both DHS and OHA

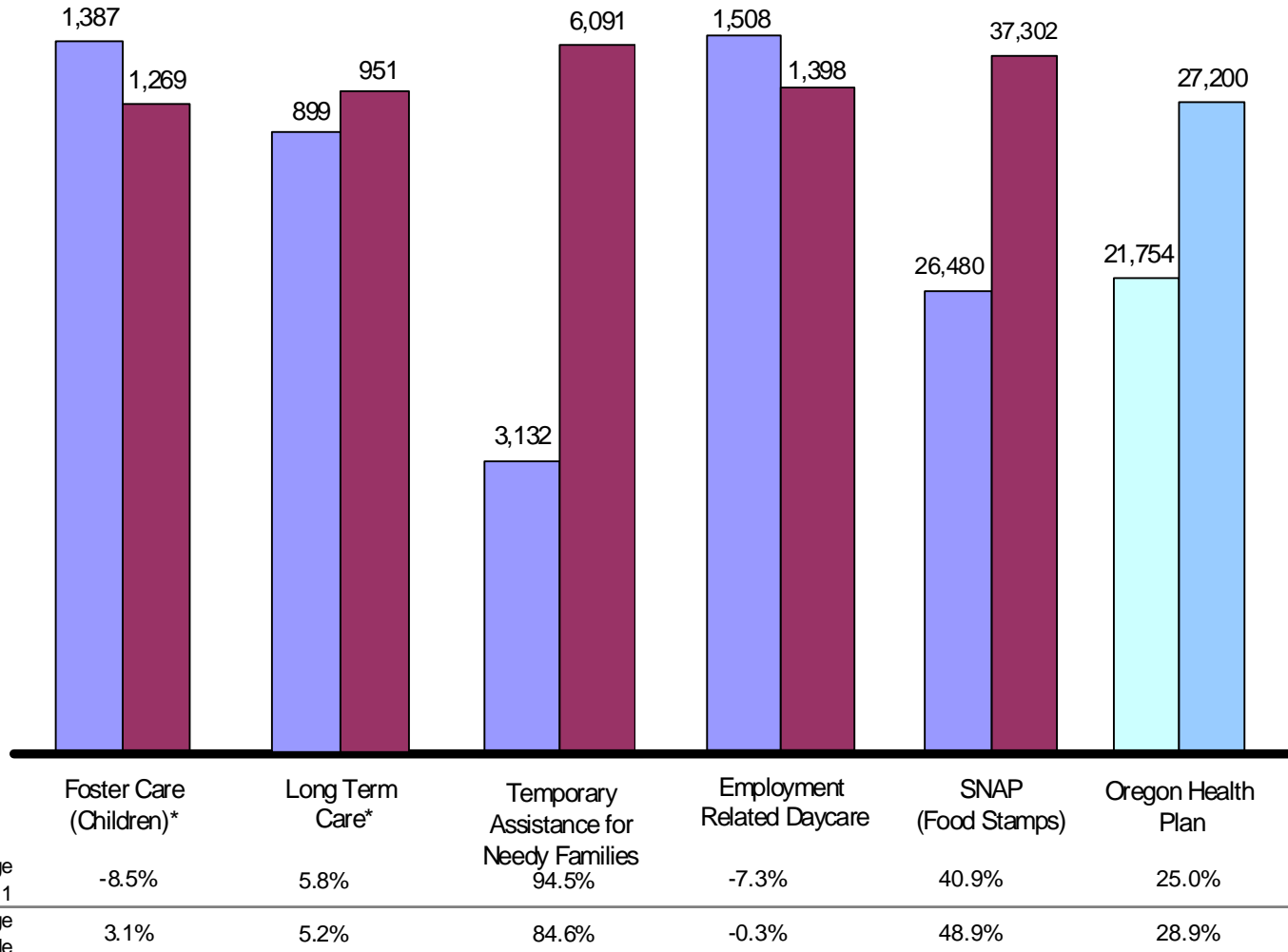


Oregon Health Authority

DHS Oregon Department of Human Services

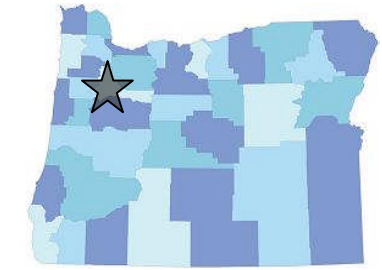
DHS & OHA Caseloads

■ Sept 2008 ■ Sept 2010



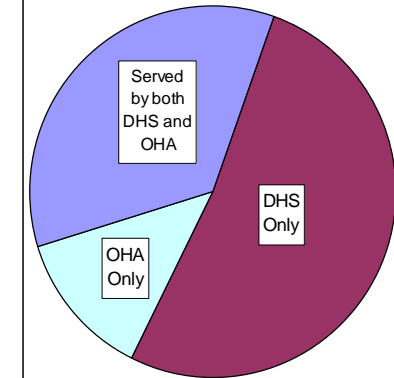
Senate District 11

Senator
Peter Courtney



All Eligibility Determinations are Performed by DHS

52% of district clients receive services from both DHS and OHA



District Demographic Information (from 2000 U.S. Census)										
	AGE				RACE*					
	Total Population	Residents Under 18	Residents Under 5	Residents 65 and Over	White	African American	American Indian	Asian	Other	Hispanic (of any race)
Number	113,050	31,884	10,102	13,361	85,271	2,014	3,375	3,293	23,806	27,733
Percent	100.0%	28.2%	8.9%	11.8%	75.4%	1.8%	3.0%	2.9%	21.0%	24.5%
Statewide Percent		24.7%	6.5%	12.9%	89.2%	2.2%	2.6%	3.6%	5.7%	8.2%

*Total for race may exceed 100% - Includes double-counts for those who indicated more than one race

Source: U.S. Census Bureau, State Legislative District Summary File

States provided updated boundaries in 2005/2006 as part of Phase 1 of the 2010 Census Redistricting Data Program.

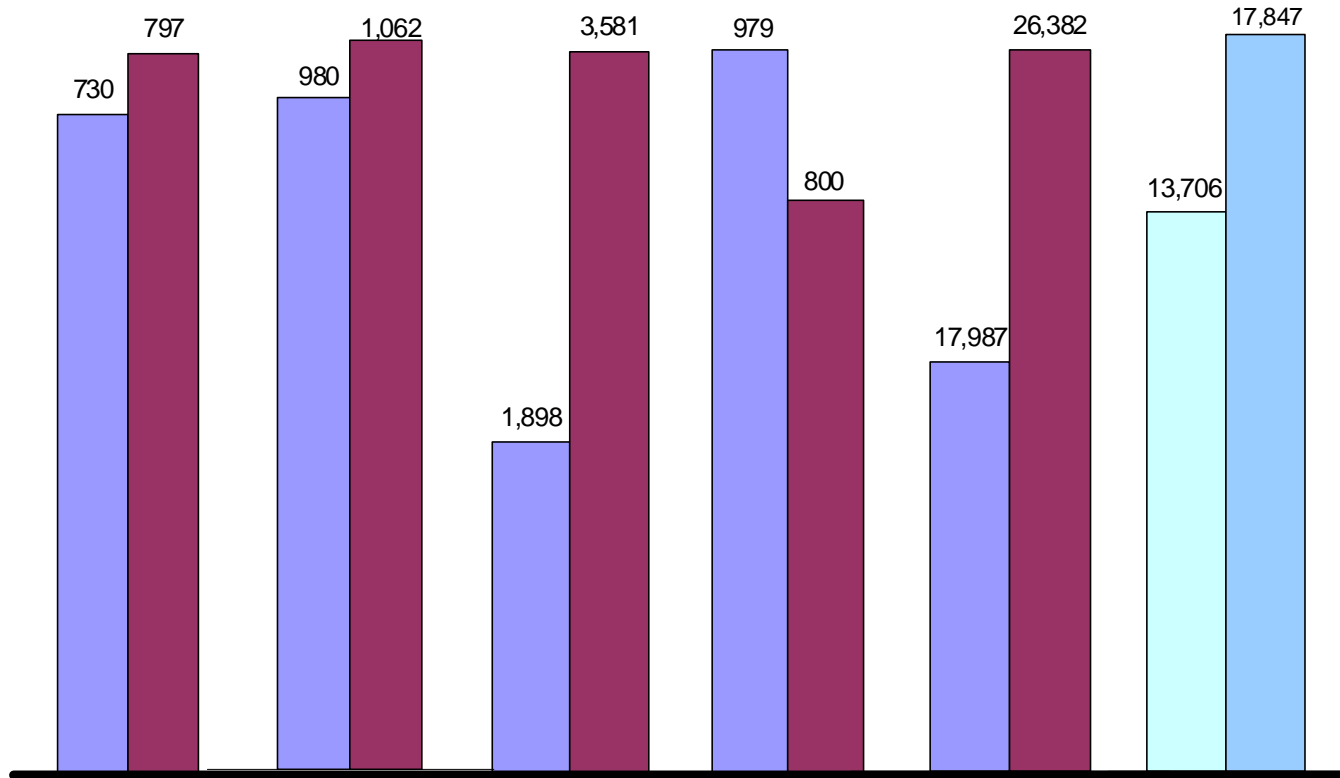
*Child Foster Care compares August 2008 to August 2010. Long Term Care compares April 2008 to April 2010

Oregon
Health
Authority

DHS
Oregon Department
of Human Services

DHS & OHA Caseloads

■ Sept 2008 ■ Sept 2010



% Change SD 12	9.2%	8.4%	88.7%	-18.3%	46.7%	30.2%
% Change Statewide	3.1%	5.2%	84.6%	-0.3%	48.9%	28.9%

District Demographic Information (from 2000 U.S. Census)										
AGE					RACE*					
	Total Population	Residents Under 18	Residents Under 5	Residents 65 and Over	White	African American	American Indian	Asian	Other	Hispanic (of any race)
Number	113,813	30,661	7,473	14,492	105,514	1,022	3,133	1,575	5,518	7,572
Percent	100.0%	26.9%	6.6%	12.7%	92.7%	0.9%	2.8%	1.4%	4.9%	6.7%
Statewide Percent		24.7%	6.5%	12.9%	89.2%	2.2%	2.6%	3.6%	5.7%	8.2%

*Total for race may exceed 100% - Includes double-counts for those who indicated more than one race

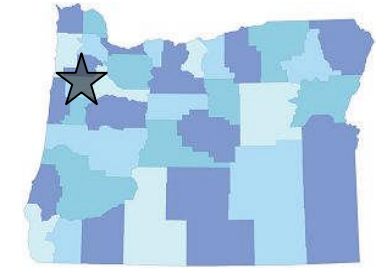
Source: U.S. Census Bureau, State Legislative District Summary File

States provided updated boundaries in 2005/2006 as part of Phase 1 of the 2010 Census Redistricting Data Program.

*Child Foster Care compares August 2008 to August 2010. Long Term Care compares April 2008 to April 2010

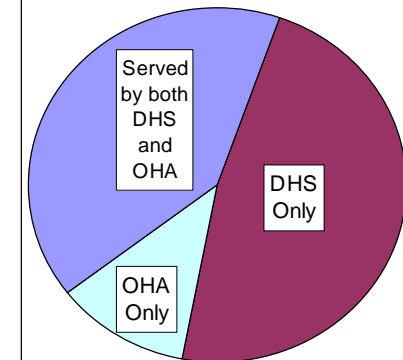
Senate District 12

Senator
Brian Boquist



All Eligibility Determinations are Performed by DHS

41% of district clients receive services from both DHS and OHA



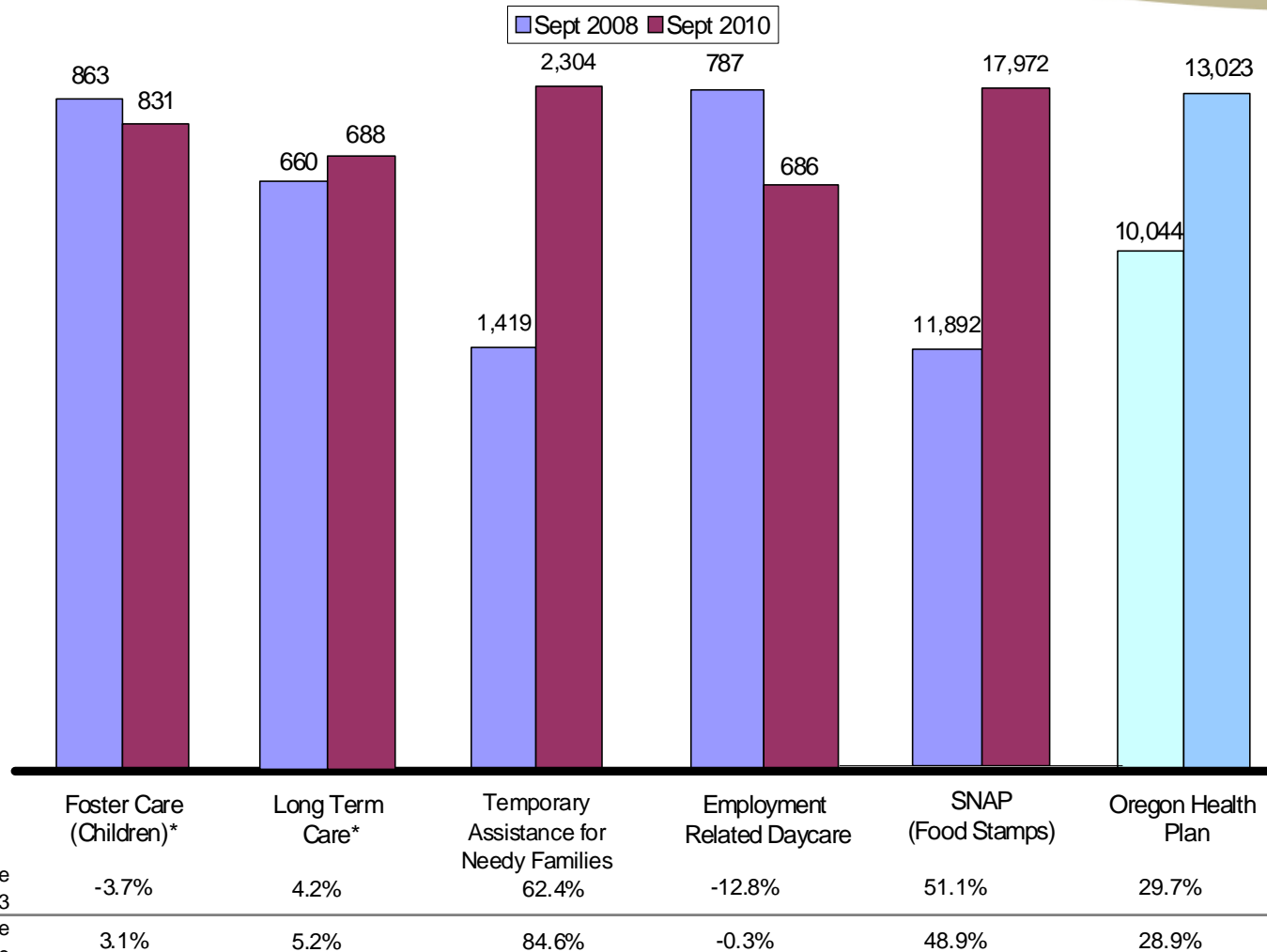
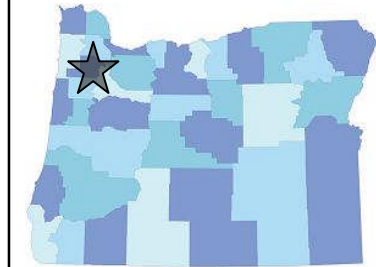
Oregon Health Authority

DHS
Oregon Department of Human Services

DHS & OHA Caseloads

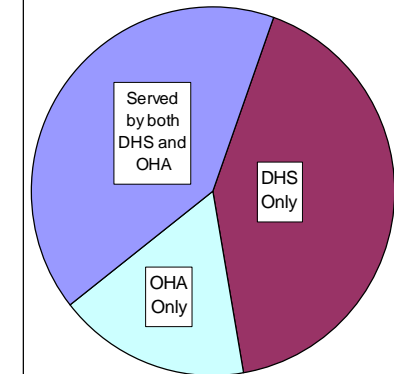
Senate District 13

Senator
Larry George



All Eligibility Determinations are Performed by DHS

44% of district clients receive services from both DHS and OHA



District Demographic Information (from 2000 U.S. Census)										
	AGE				RACE*					
	Total Population	Residents Under 18	Residents Under 5	Residents 65 and Over	White	African American	American Indian	Asian	Other	Hispanic (of any race)
Number	114,570	32,205	9,040	11,657	103,559	1,114	1,827	3,981	7,536	8,730
Percent	100.0%	28.1%	7.9%	10.2%	90.4%	1.0%	1.6%	3.5%	6.6%	7.6%
Statewide Percent		24.7%	6.5%	12.9%	89.2%	2.2%	2.6%	3.6%	5.7%	8.2%

*Total for race may exceed 100% - Includes double-counts for those who indicated more than one race

Source: U.S. Census Bureau, State Legislative District Summary File

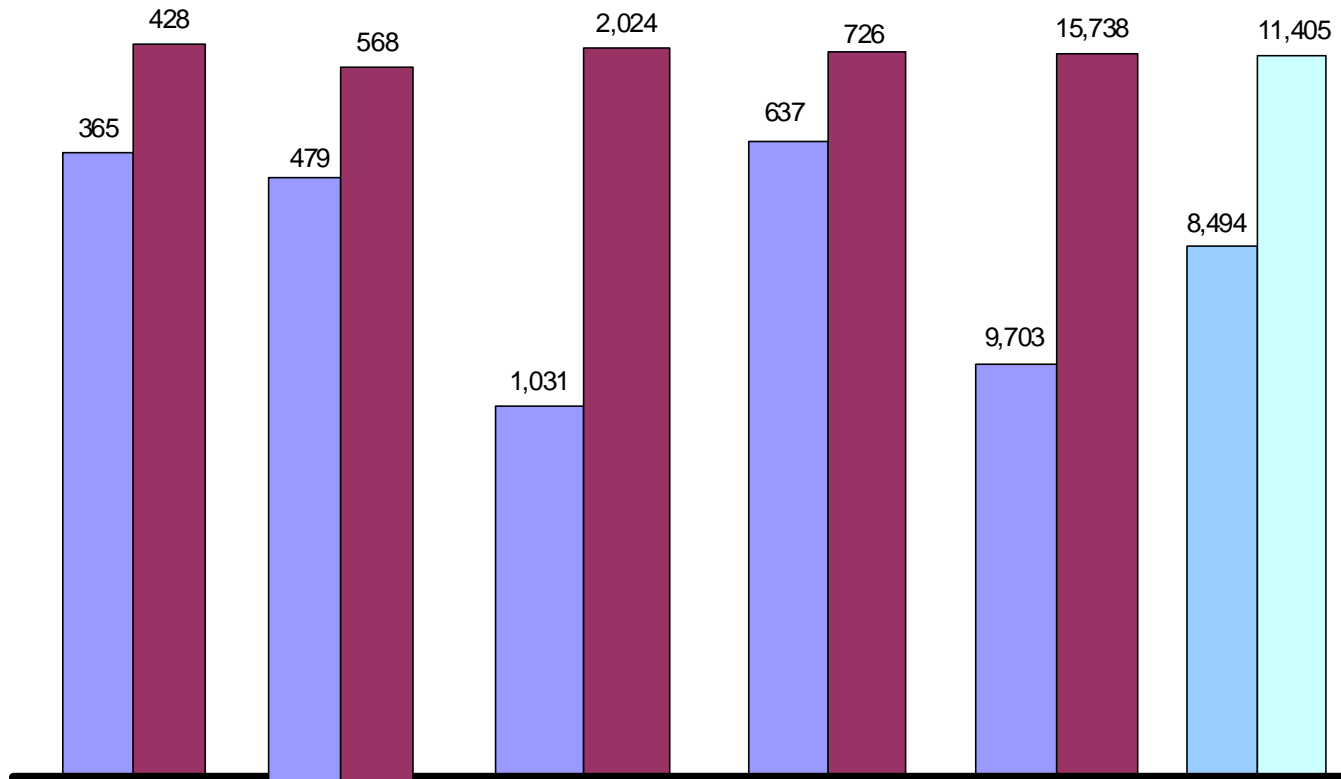
States provided updated boundaries in 2005/2006 as part of Phase 1 of the 2010 Census Redistricting Data Program.

*Child Foster Care compares August 2008 to August 2010. Long Term Care compares April 2008 to April 2010



DHS & OHA Caseloads

■ Sept 2008 ■ Sept 2010



	Foster Care (Children)*	Long Term Care*	Temporary Assistance for Needy Families	Employment Related Daycare	SNAP (Food Stamps)	Oregon Health Plan
% Change SD 14	17.3%	18.6%	96.3%	14.0%	62.2%	34.3%
% Change Statewide	3.1%	5.2%	84.6%	-0.3%	48.9%	28.9%

District Demographic Information (from 2000 U.S. Census)										
	AGE				RACE*					
	Total Population	Residents Under 18	Residents Under 5	Residents 65 and Over	White	African American	American Indian	Asian	Other	Hispanic (of any race)
Number	115,064	29,943	8,457	11,216	98,334	2,379	1,606	9,574	7,512	7,904
Percent	100.0%	26.0%	7.3%	9.7%	85.5%	2.1%	1.4%	8.3%	6.5%	6.9%
Statewide Percent		24.7%	6.5%	12.9%	89.2%	2.2%	2.6%	3.6%	5.7%	8.2%

*Total for race may exceed 100% - Includes double-counts for those who indicated more than one race
 Source: U.S. Census Bureau, State Legislative District Summary File
 States provided updated boundaries in 2005/2006 as part of Phase 1 of the 2010 Census Redistricting Data Program.

*Child Foster Care compares August 2008 to August 2010. Long Term Care compares April 2008 to April 2010

Senate District 14

Senator Mark Hass

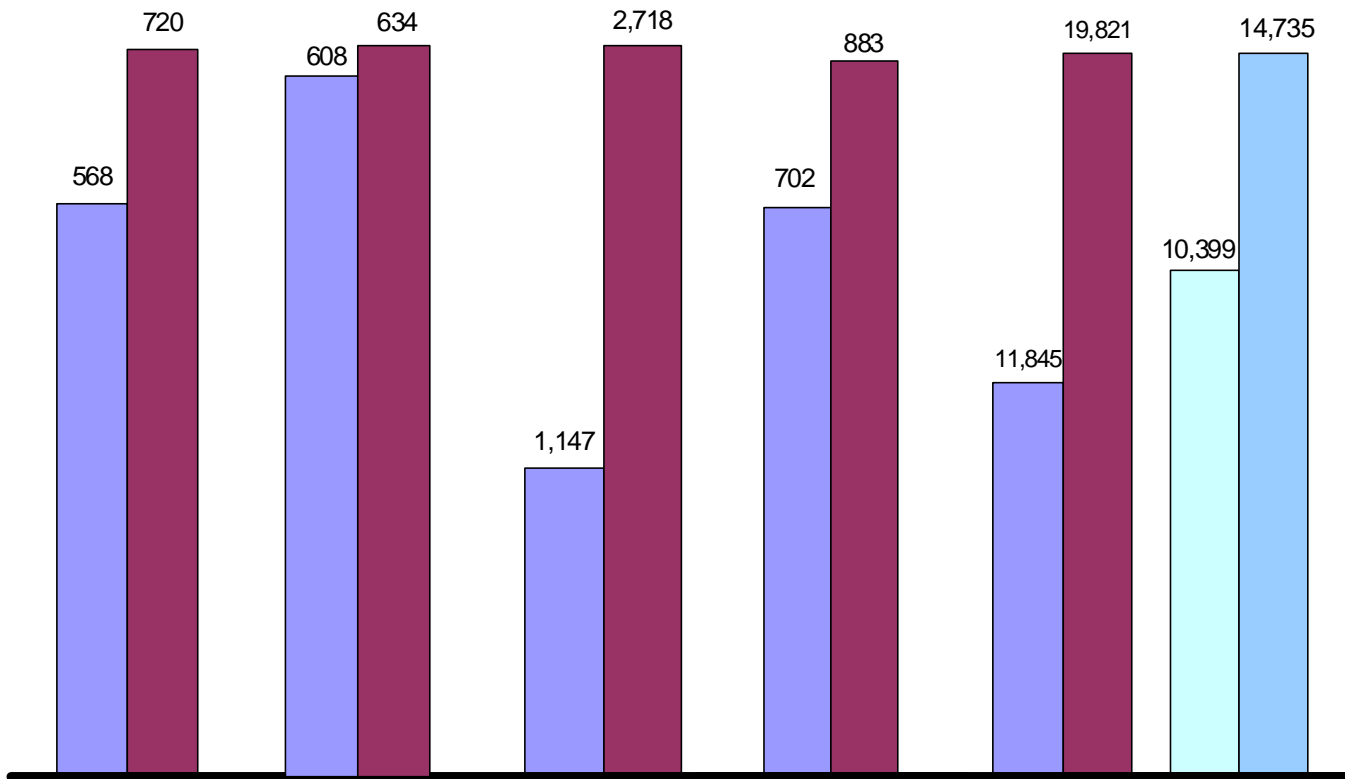
All Eligibility Determinations are Performed by DHS

44% of district clients receive services from both DHS and OHA



DHS & OHA Caseloads

■ Sept 2008 ■ Sept 2010



	Foster Care (Children)*	Long Term Care*	Temporary Assistance for Needy Families	Employment Related Daycare	SNAP (Food Stamps)	Oregon Health Plan
% Change SD 15	26.8%	4.3%	137.0%	25.8%	67.3%	41.7%
% Change Statewide	3.1%	5.2%	84.6%	-0.3%	48.9%	28.9%

District Demographic Information (from 2000 U.S. Census)										
	AGE				RACE*					
	Total Population	Residents Under 18	Residents Under 5	Residents 65 and Over	White	African American	American Indian	Asian	Other	Hispanic (of any race)
Number	115,004	32,411	10,123	9,193	94,037	1,622	1,853	7,075	14,478	17,305
Percent	100.0%	28.2%	8.8%	8.0%	81.8%	1.4%	1.6%	6.2%	12.6%	15.0%
Statewide Percent		24.7%	6.5%	12.9%	89.2%	2.2%	2.6%	3.6%	5.7%	8.2%

*Total for race may exceed 100% - Includes double-counts for those who indicated more than one race

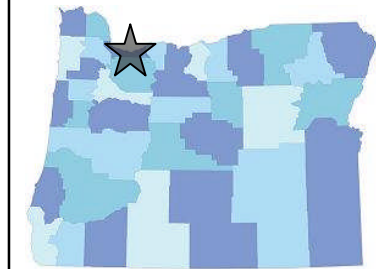
Source: U.S. Census Bureau, State Legislative District Summary File

States provided updated boundaries in 2005/2006 as part of Phase 1 of the 2010 Census Redistricting Data Program.

*Child Foster Care compares August 2008 to August 2010. Long Term Care compares April 2008 to April 2010

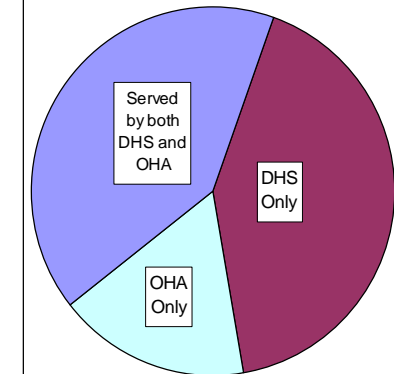
Senate District 15

Senator
Bruce Starr



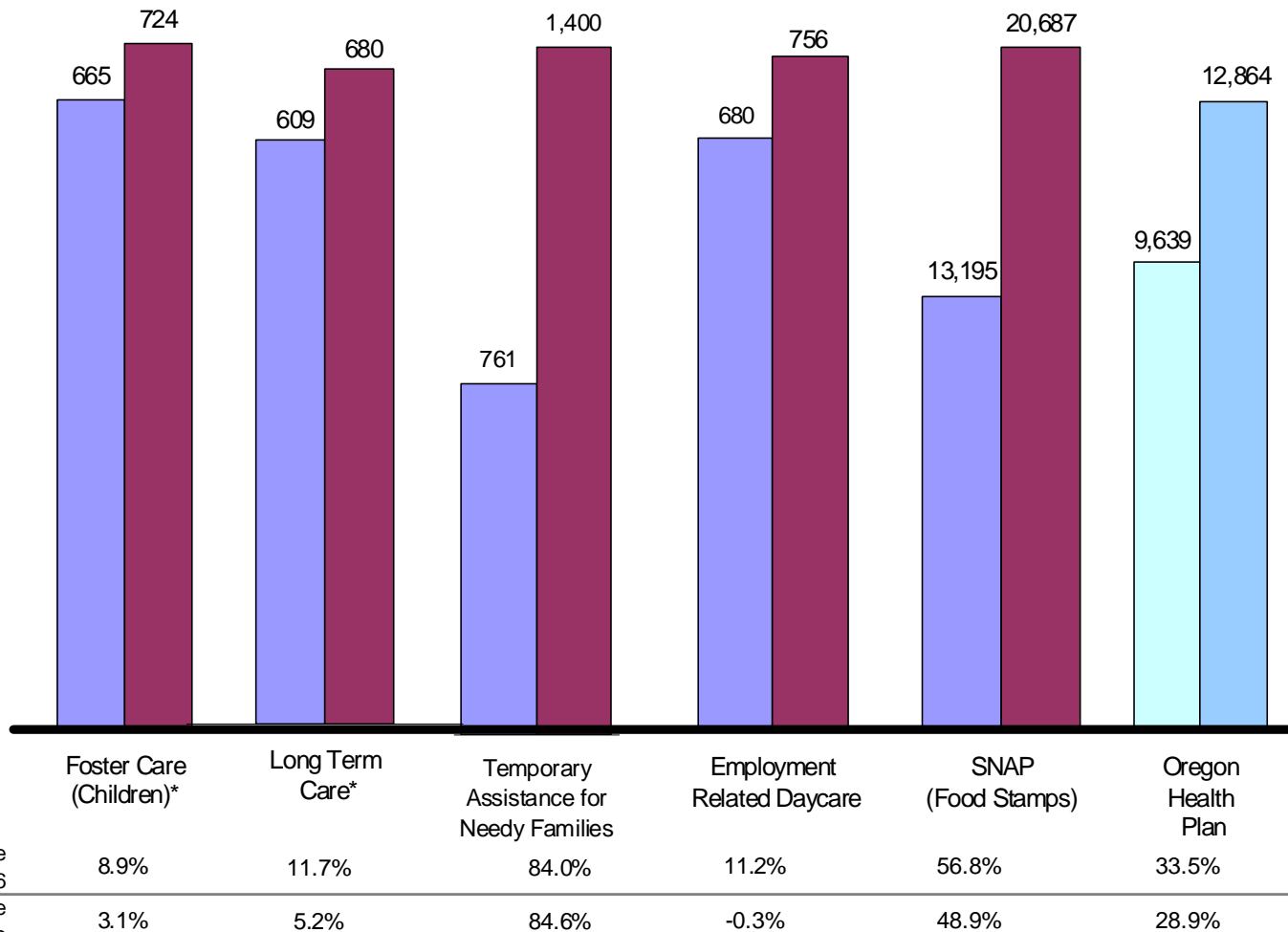
All Eligibility Determinations are Performed by DHS

46% of district clients receive services from both DHS and OHA



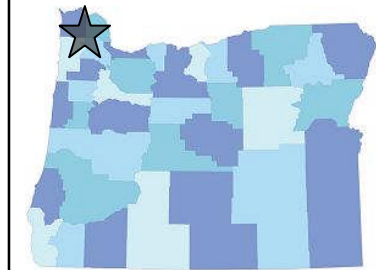
DHS & OHA Caseloads

■ Sept 2008 ■ Sept 2010



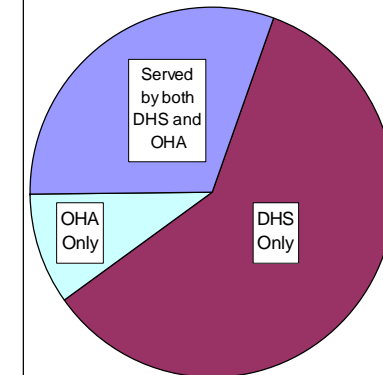
Senate District 16

Senator
Betsy Johnson



All Eligibility Determinations are Performed by DHS

39% of district clients receive services from both DHS and OHA



District Demographic Information (from 2000 U.S. Census)										
	AGE				RACE*					
	Total Population	Residents Under 18	Residents Under 5	Residents 65 and Over	White	African American	American Indian	Asian	Other	Hispanic (of any race)
Number	114,285	28,613	6,594	16,393	109,602	570	2,736	1,524	2,640	3,367
Percent	100.0%	25.0%	5.8%	14.3%	95.9%	0.5%	2.4%	1.3%	2.3%	2.9%
Statewide Percent		24.7%	6.5%	12.9%	89.2%	2.2%	2.6%	3.6%	5.7%	8.2%

*Total for race may exceed 100% - Includes double-counts for those who indicated more than one race

Source: U.S. Census Bureau, State Legislative District Summary File

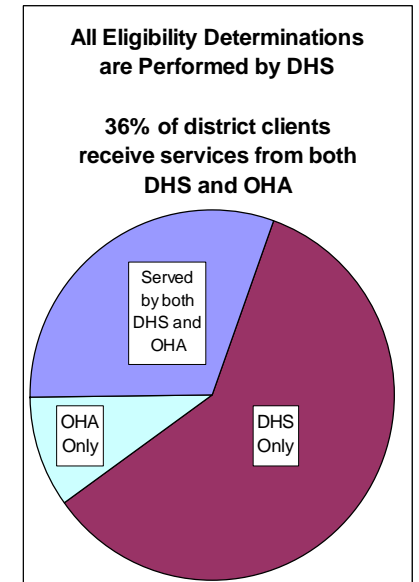
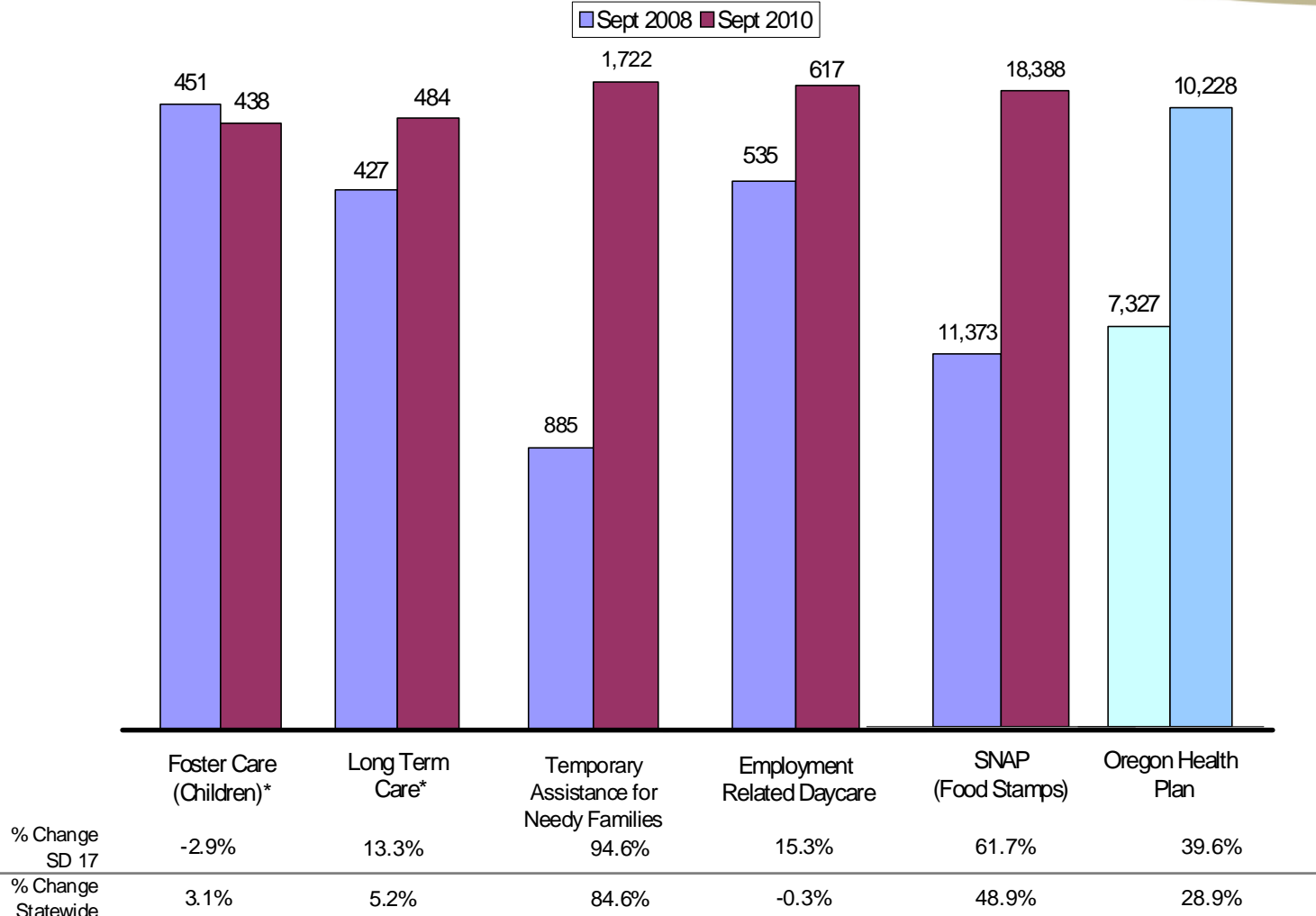
States provided updated boundaries in 2005/2006 as part of Phase 1 of the 2010 Census Redistricting Data Program.

*Child Foster Care compares August 2008 to August 2010. Long Term Care compares April 2008 to April 2010



DHS & OHA Caseloads

Senate District 17
 Senator
 Suzanne Bonamici



District Demographic Information (from 2000 U.S. Census)										
	AGE				RACE*					
	Total Population	Residents Under 18	Residents Under 5	Residents 65 and Over	White	African American	American Indian	Asian	Other	Hispanic (of any race)
Number	114,347	26,273	7,643	9,203	95,888	2,457	1,574	12,656	5,561	5,489
Percent	100.0%	23.0%	6.7%	8.0%	83.9%	2.1%	1.4%	11.1%	4.9%	4.8%
Statewide Percent		24.7%	6.5%	12.9%	89.2%	2.2%	2.6%	3.6%	5.7%	8.2%

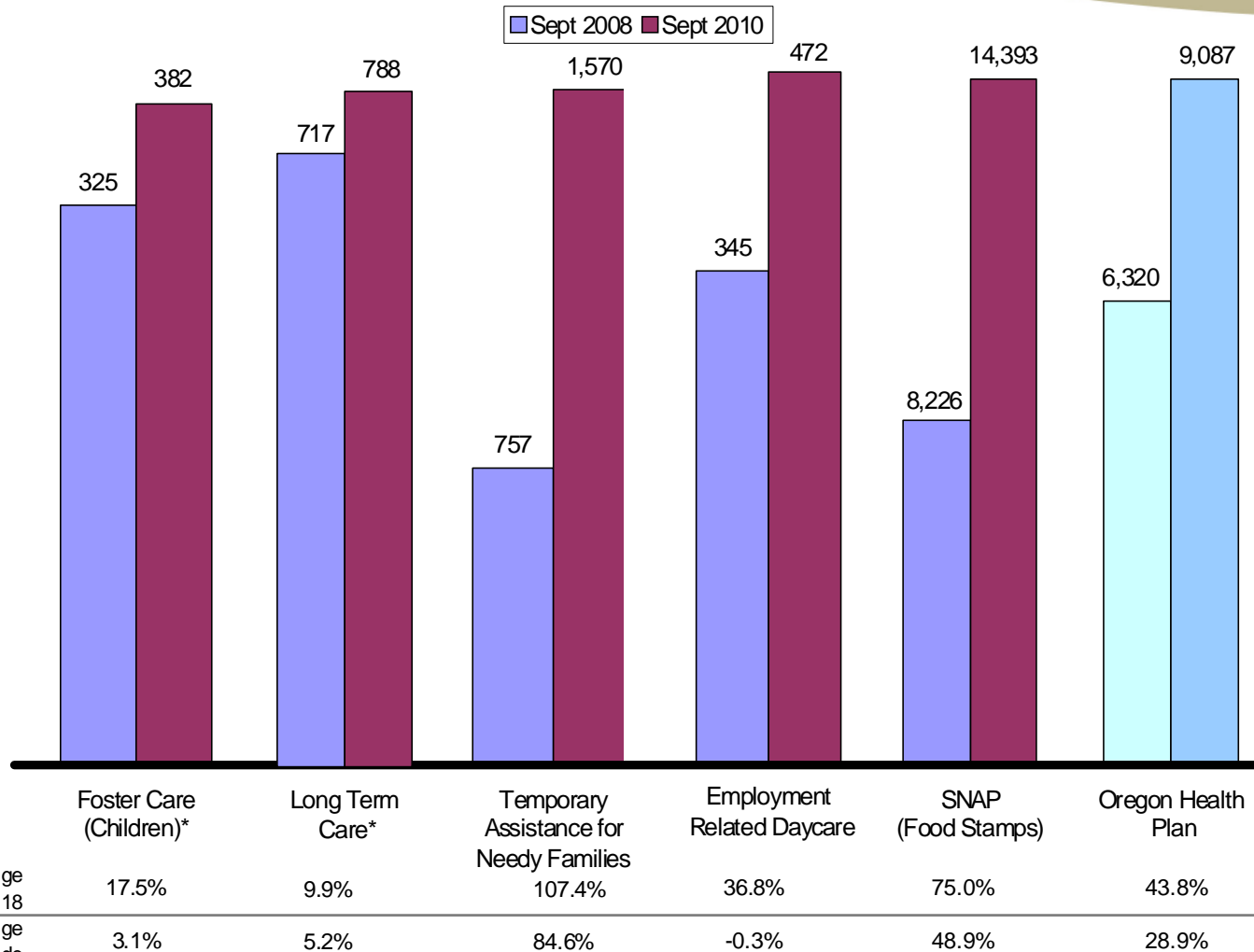
*Total for race may exceed 100% - Includes double-counts for those who indicated more than one race

Source: U.S. Census Bureau, State Legislative District Summary File
 States provided updated boundaries in 2005/2006 as part of Phase 1 of the 2010 Census Redistricting Data Program.

*Child Foster Care compares August 2008 to August 2010. Long Term Care compares April 2008 to April 2010

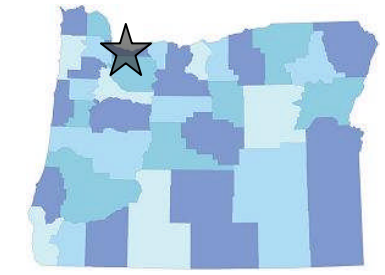


DHS & OHA Caseloads



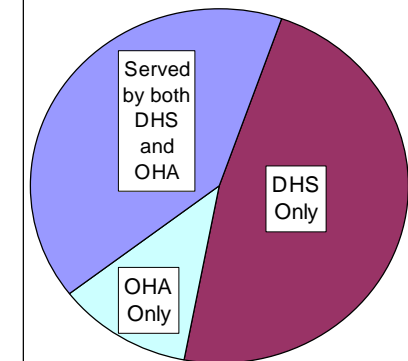
Senate District 18

Senator
Ginny Burdick



All Eligibility Determinations are Performed by DHS

41% of district clients receive services from both DHS and OHA



District Demographic Information (from 2000 U.S. Census)										
	AGE				RACE*					
	Total Population	Residents Under 18	Residents Under 5	Residents 65 and Over	White	African American	American Indian	Asian	Other	Hispanic (of any race)
Number	114,047	22,129	6,471	14,355	101,430	2,842	1,735	7,173	4,666	4,724
Percent	100.0%	19.4%	5.7%	12.6%	88.9%	2.5%	1.5%	6.3%	4.1%	4.1%
Statewide Percent		24.7%	6.5%	12.9%	89.2%	2.2%	2.6%	3.6%	5.7%	8.2%

*Total for race may exceed 100% - Includes double-counts for those who indicated more than one race

Source: U.S. Census Bureau, State Legislative District Summary File

States provided updated boundaries in 2005/2006 as part of Phase 1 of the 2010 Census Redistricting Data Program.

*Child Foster Care compares August 2008 to August 2010. Long Term Care compares April 2008 to April 2010

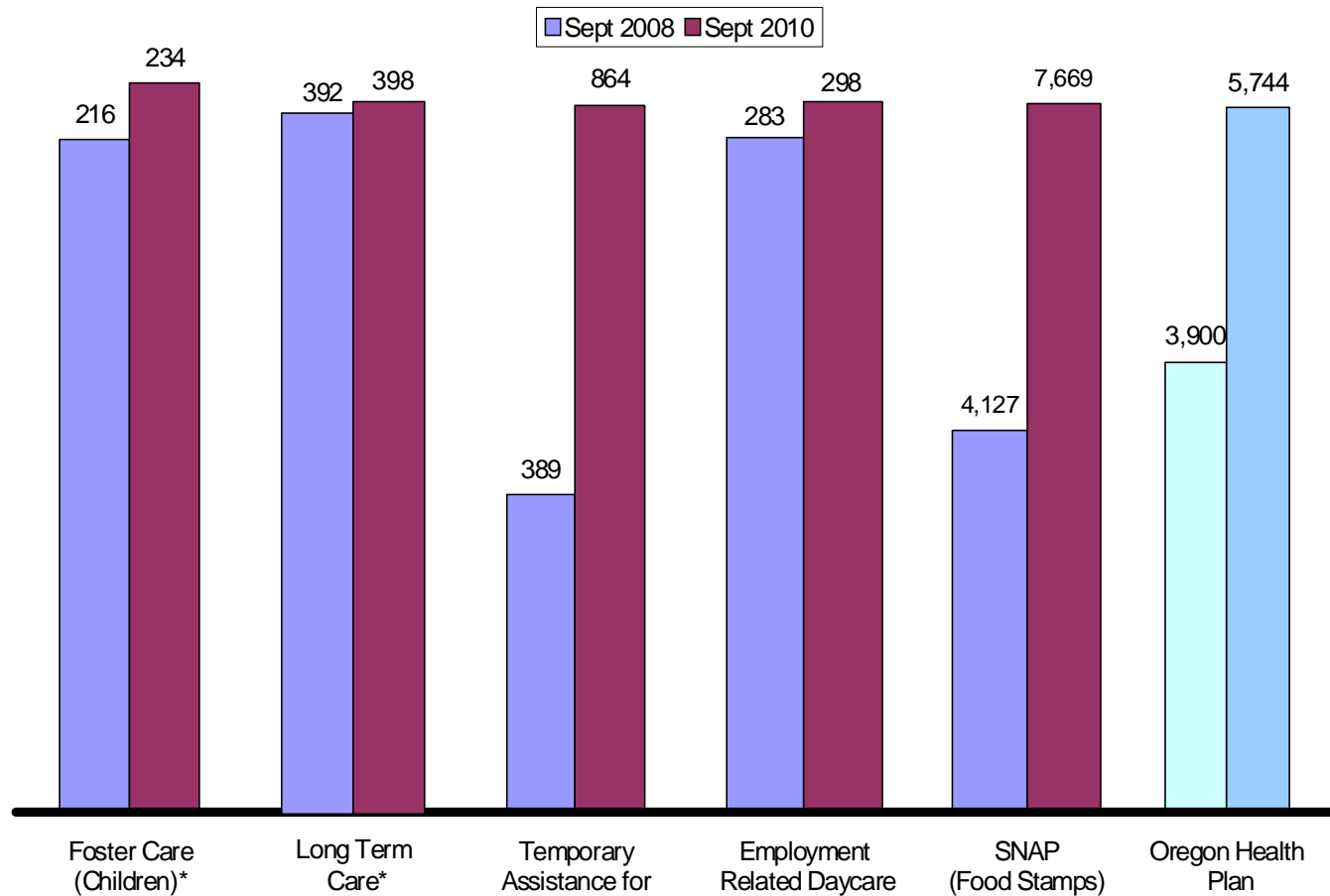
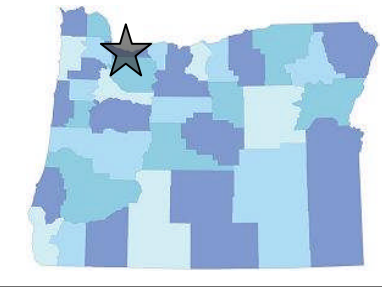
Oregon
Health
Authority

DHS
Oregon Department
of Human Services

DHS & OHA Caseloads

Senate District 19

Senator
Richard Devlin



% Change SD 19

8.3% 1.5% 122.1% 5.3% 85.8% 47.3%

% Change Statewide

3.1% 5.2% 84.6% -0.3% 48.9% 28.9%

District Demographic Information (from 2000 U.S. Census)										
	AGE				RACE*					
	Total Population	Residents Under 18	Residents Under 5	Residents 65 and Over	White	African American	American Indian	Asian	Other	Hispanic (of any race)
Number	113,554	29,484	6,772	10,664	105,752	1,225	1,168	5,324	3,171	3,672
Percent	100.0%	26.0%	6.0%	9.4%	93.1%	1.1%	1.0%	4.7%	2.8%	3.2%
Statewide Percent		24.7%	6.5%	12.9%	89.2%	2.2%	2.6%	3.6%	5.7%	8.2%

*Total for race may exceed 100% - Includes double-counts for those who indicated more than one race

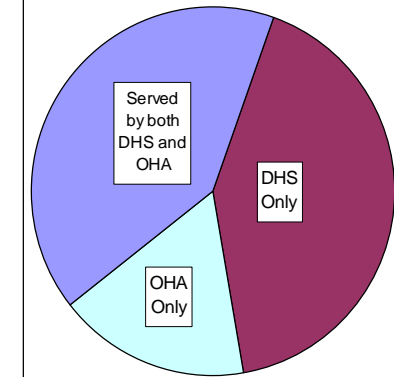
Source: U.S. Census Bureau, State Legislative District Summary File

States provided updated boundaries in 2005/2006 as part of Phase 1 of the 2010 Census Redistricting Data Program.

*Child Foster Care compares August 2008 to August 2010. Long Term Care compares April 2008 to April 2010

All Eligibility Determinations are Performed by DHS

41% of district clients receive services from both DHS and OHA



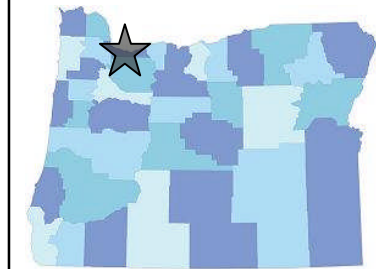
Oregon Health Authority

DHS Oregon Department of Human Services

DHS & OHA Caseloads

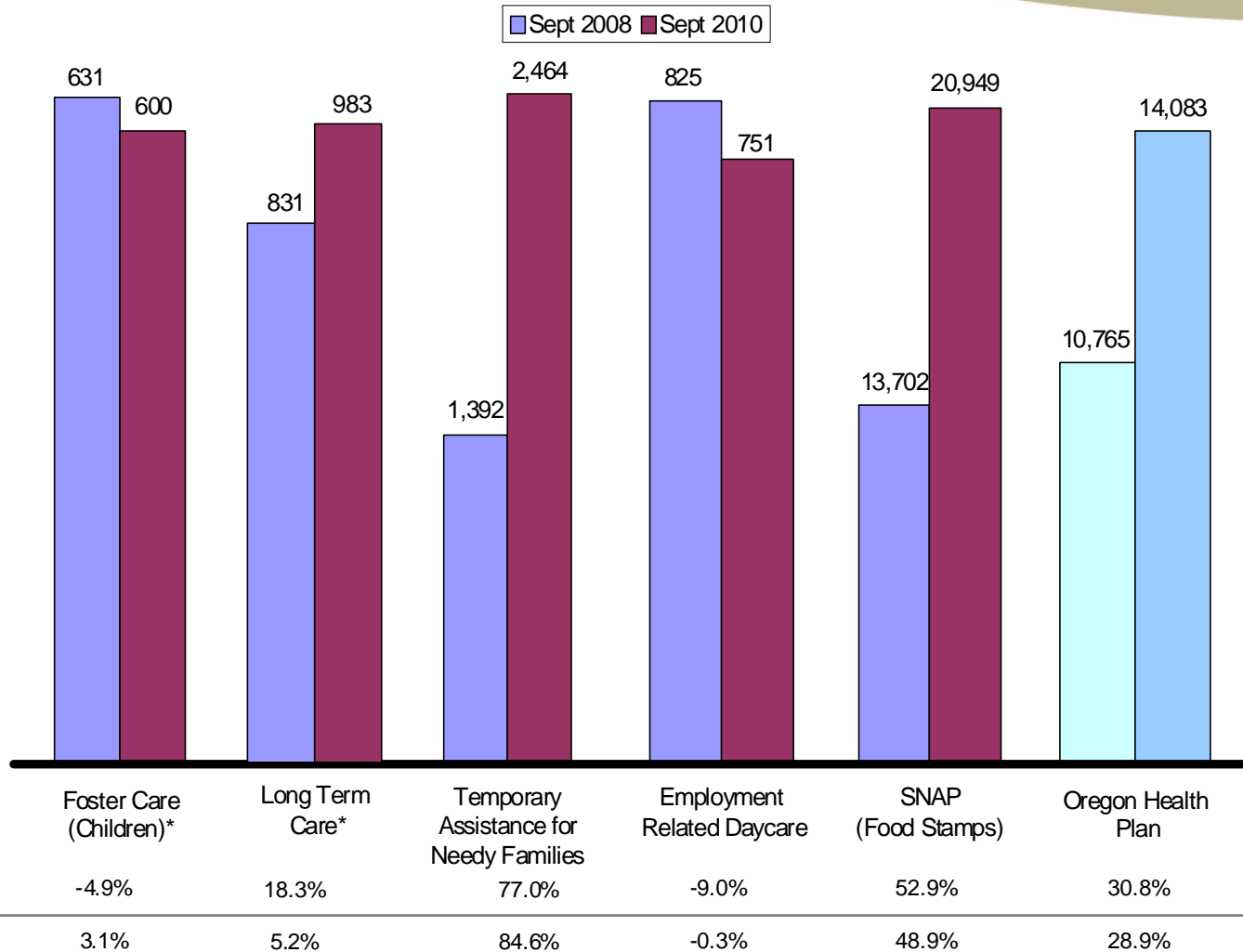
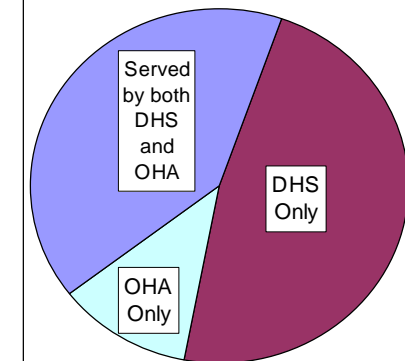
Senate District 20

Senator
Alan Olsen



All Eligibility Determinations
are Performed by DHS

41% of district clients
receive services from both
DHS and OHA



District Demographic Information (from 2000 U.S. Census)										
	AGE				RACE*					
	Total Population	Residents Under 18	Residents Under 5	Residents 65 and Over	White	African American	American Indian	Asian	Other	Hispanic (of any race)
Number	114,063	29,454	8,054	14,109	106,908	1,203	1,881	2,461	4,733	5,753
Percent	100.0%	25.8%	7.1%	12.4%	93.7%	1.1%	1.6%	2.2%	4.1%	5.0%
Statewide Percent		24.7%	6.5%	12.9%	89.2%	2.2%	2.6%	3.6%	5.7%	8.2%

*Total for race may exceed 100% - Includes double-counts for those who indicated more than one race

Source: U.S. Census Bureau, State Legislative District Summary File

States provided updated boundaries in 2005/2006 as part of Phase 1 of the 2010 Census Redistricting Data Program.

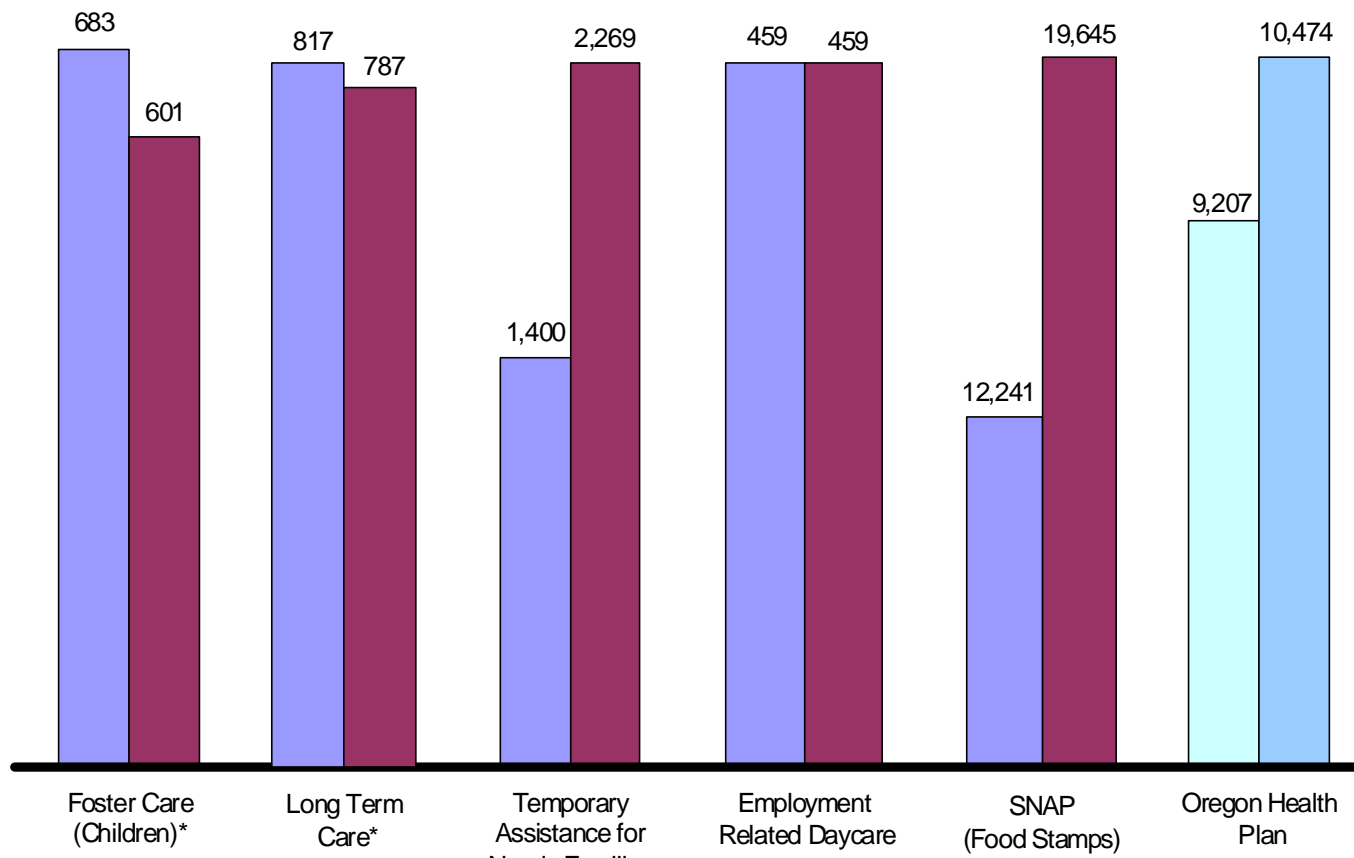
*Child Foster Care compares August 2008 to August 2010. Long Term Care compares April 2008 to April 2010

Oregon
Health
Authority

DHS
Oregon Department
of Human Services

DHS & OHA Caseloads

■ Sept 2008 ■ Sept 2010



% Change SD 21	-12.0%	-3.7%	62.1%	0.0%	60.5%	13.8%
% Change Statewide	3.1%	5.2%	84.6%	-0.3%	48.9%	28.9%

District Demographic Information (from 2000 U.S. Census)										
	AGE				RACE*					
	Total Population	Residents Under 18	Residents Under 5	Residents 65 and Over	White	African American	American Indian	Asian	Other	Hispanic (of any race)
Number	114,163	20,863	6,193	12,729	101,787	3,121	2,557	6,982	4,216	3,581
Percent	100.0%	18.3%	5.4%	11.1%	89.2%	2.7%	2.2%	6.1%	3.7%	3.1%
Statewide Percent		24.7%	6.5%	12.9%	89.2%	2.2%	2.6%	3.6%	5.7%	8.2%

*Total for race may exceed 100% - Includes double-counts for those who indicated more than one race

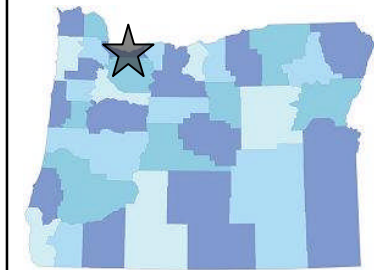
Source: U.S. Census Bureau, State Legislative District Summary File

States provided updated boundaries in 2005/2006 as part of Phase 1 of the 2010 Census Redistricting Data Program.

*Child Foster Care compares August 2008 to August 2010. Long Term Care compares April 2008 to April 2010

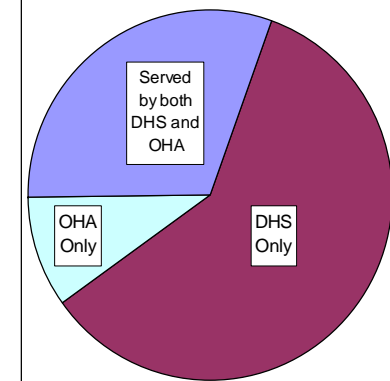
Senate District 21

Senator
Diane Rosenbaum



All Eligibility Determinations are Performed by DHS

36% of district clients receive services from both DHS and OHA



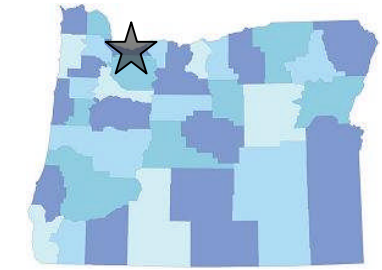
Oregon Health Authority

DHS
Oregon Department of Human Services

DHS & OHA Caseloads

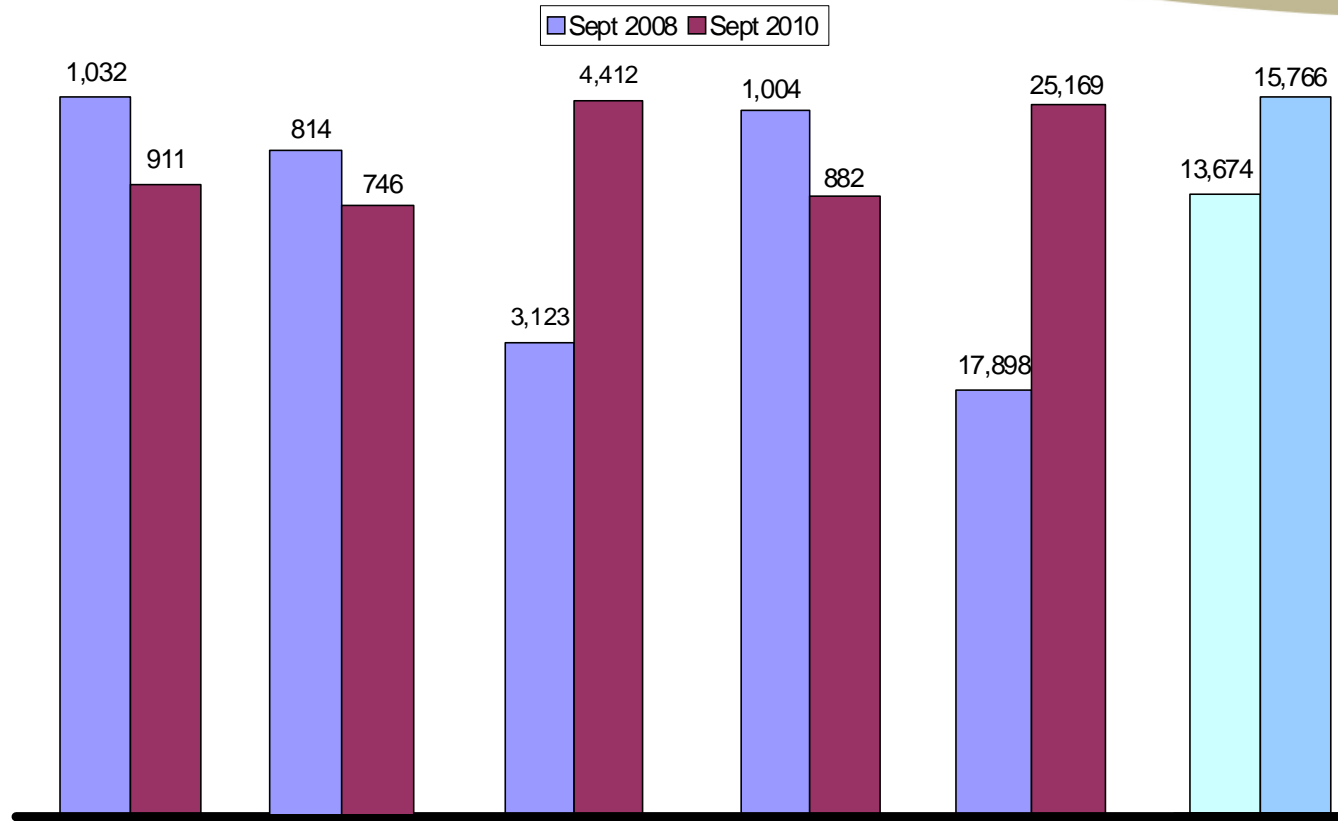
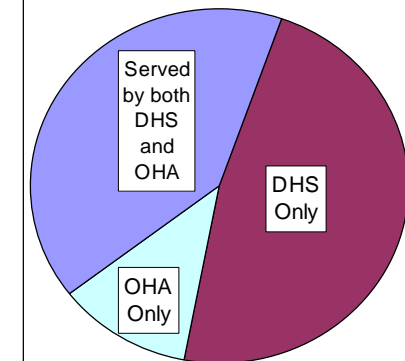
Senate District 22

Senator
Chip Shields



All Eligibility Determinations are Performed by DHS

41% of district clients receive services from both DHS and OHA



% Change SD 22

Category	% Change SD 22	% Change Statewide
Foster Care (Children)*	-11.7%	3.1%
Long Term Care*	-8.4%	5.2%
Temporary Assistance for Needy Families	41.3%	84.6%
Employment Related Daycare	-12.2%	-0.3%
SNAP (Food Stamps)	40.6%	48.9%
Oregon Health Plan	15.3%	28.9%

% Change Statewide

District Demographic Information (from 2000 U.S. Census)											
	AGE				RACE*						Hispanic (of any race)
	Total Population	Residents Under 18	Residents Under 5	Residents 65 and Over	White	African American	American Indian	Asian	Other		
Number	114,141	27,265	7,927	11,122	75,104	26,938	3,969	5,976	9,519	8,217	
Percent	100.0%	23.9%	6.9%	9.7%	65.8%	23.6%	3.5%	5.2%	8.3%	7.2%	
Statewide Percent		24.7%	6.5%	12.9%	89.2%	2.2%	2.6%	3.6%	5.7%	8.2%	

*Total for race may exceed 100% - Includes double-counts for those who indicated more than one race

Source: U.S. Census Bureau, State Legislative District Summary File

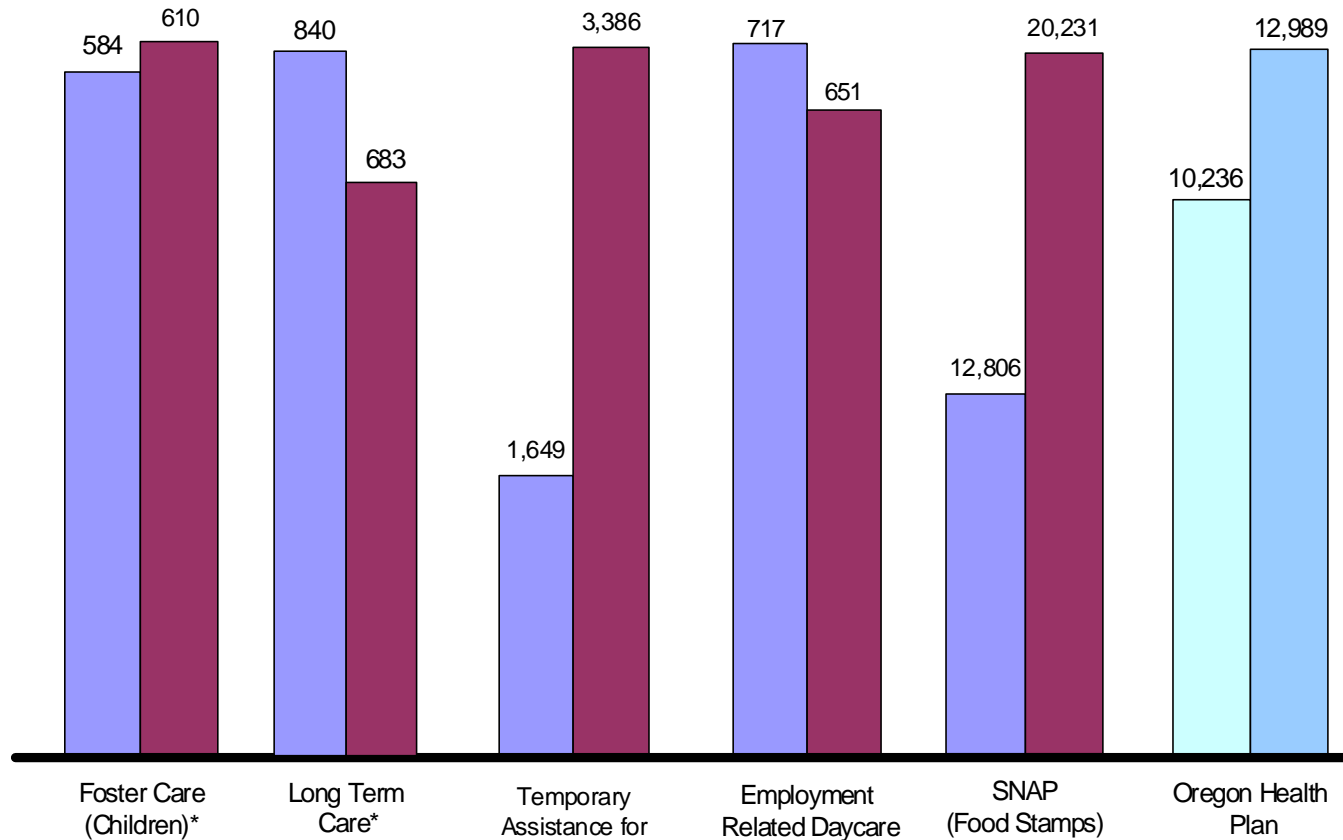
States provided updated boundaries in 2005/2006 as part of Phase 1 of the 2010 Census Redistricting Data Program.

*Child Foster Care compares August 2008 to August 2010. Long Term Care compares April 2008 to April 2010



DHS & OHA Caseloads

■ Sept 2008 ■ Sept 2010



% Change SD 23

Foster Care (Children)*: 4.5% Long Term Care*: -18.7% Temporary Assistance for Needy Families: 105.3% Employment Related Daycare: -9.2% SNAP (Food Stamps): 58.0% Oregon Health Plan: 26.9%

% Change Statewide

Foster Care (Children)*: 3.1% Long Term Care*: 5.2% Temporary Assistance for Needy Families: 84.6% Employment Related Daycare: -0.3% SNAP (Food Stamps): 48.9% Oregon Health Plan: 28.9%

District Demographic Information (from 2000 U.S. Census)										
	AGE				RACE*					
	Total Population	Residents Under 18	Residents Under 5	Residents 65 and Over	White	African American	American Indian	Asian	Other	Hispanic (of any race)
Number	114,123	25,022	7,153	13,806	93,913	5,211	2,196	11,708	5,857	4,832
Percent	100.0%	21.9%	6.3%	12.1%	82.3%	4.6%	1.9%	10.3%	5.1%	4.2%
Statewide Percent		24.7%	6.5%	12.9%	89.2%	2.2%	2.6%	3.6%	5.7%	8.2%

*Total for race may exceed 100% - Includes double-counts for those who indicated more than one race

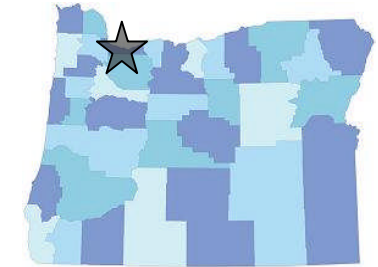
Source: U.S. Census Bureau, State Legislative District Summary File

States provided updated boundaries in 2005/2006 as part of Phase 1 of the 2010 Census Redistricting Data Program.

*Child Foster Care compares August 2008 to August 2010. Long Term Care compares April 2008 to April 2010

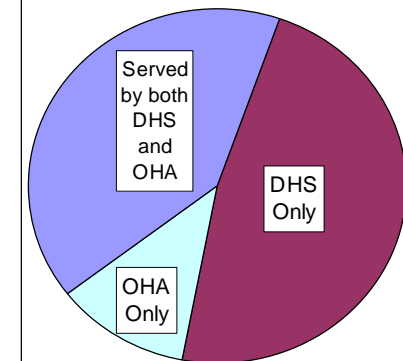
Senate District 23

Senator Jackie Dingfelder



All Eligibility Determinations are Performed by DHS

41% of district clients receive services from both DHS and OHA



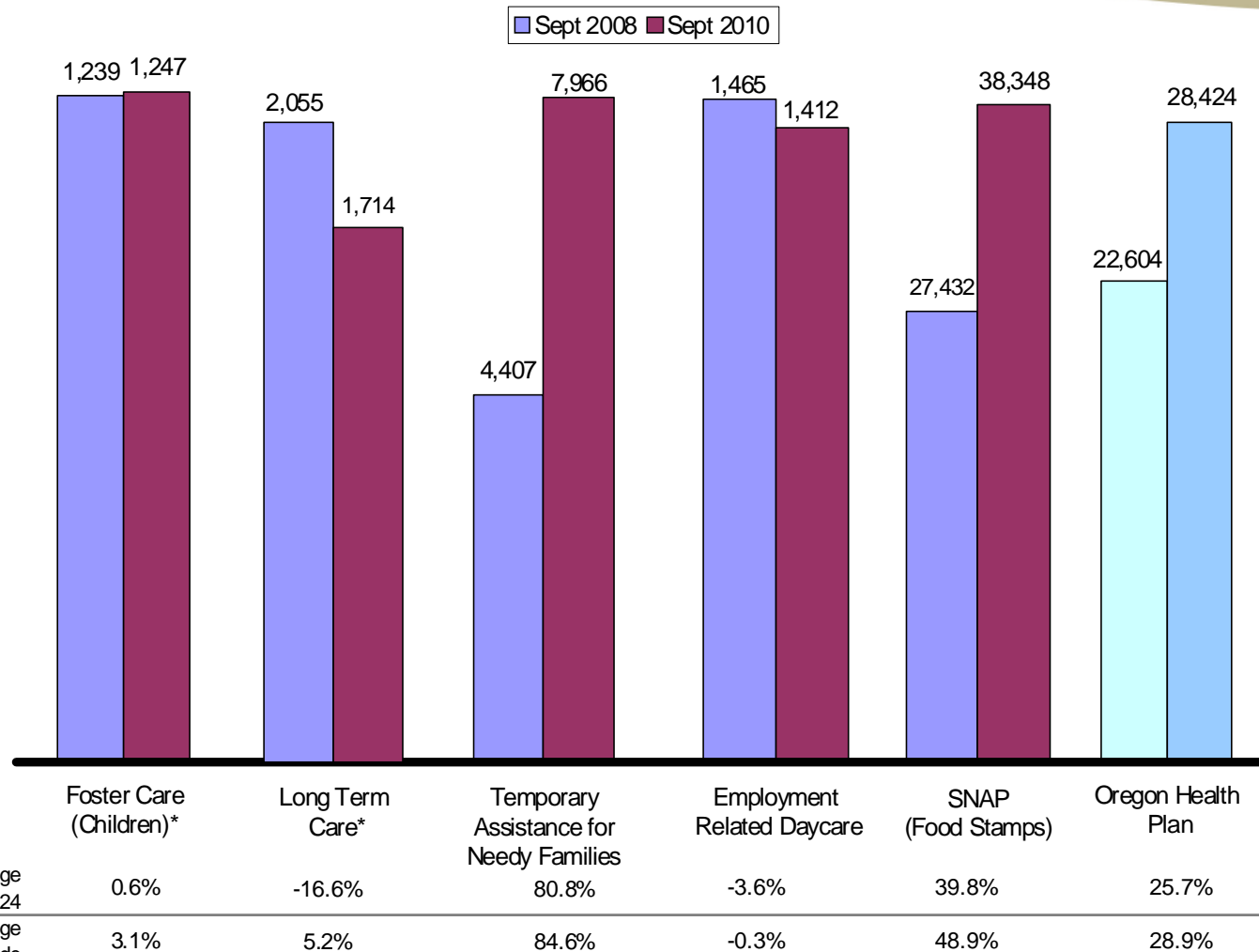
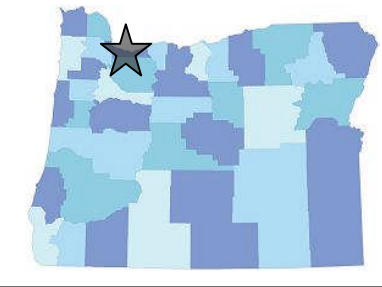
Oregon Health Authority

DHS Oregon Department of Human Services

DHS & OHA Caseloads

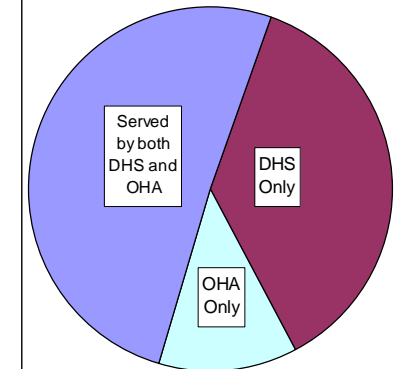
Senate District 24

Senator
Rod Monroe



All Eligibility Determinations are Performed by DHS

51% of district clients receive services from both DHS and OHA



District Demographic Information (from 2000 U.S. Census)										
	AGE				RACE*					
	Total Population	Residents Under 18	Residents Under 5	Residents 65 and Over	White	African American	American Indian	Asian	Other	Hispanic (of any race)
Number	113,354	29,785	8,521	15,791	94,245	3,738	2,152	10,469	7,470	6,788
Percent	100.0%	26.3%	7.5%	13.9%	83.1%	3.3%	1.9%	9.2%	6.6%	6.0%
Statewide Percent		24.7%	6.5%	12.9%	89.2%	2.2%	2.6%	3.6%	5.7%	8.2%

*Total for race may exceed 100% - Includes double-counts for those who indicated more than one race

Source: U.S. Census Bureau, State Legislative District Summary File

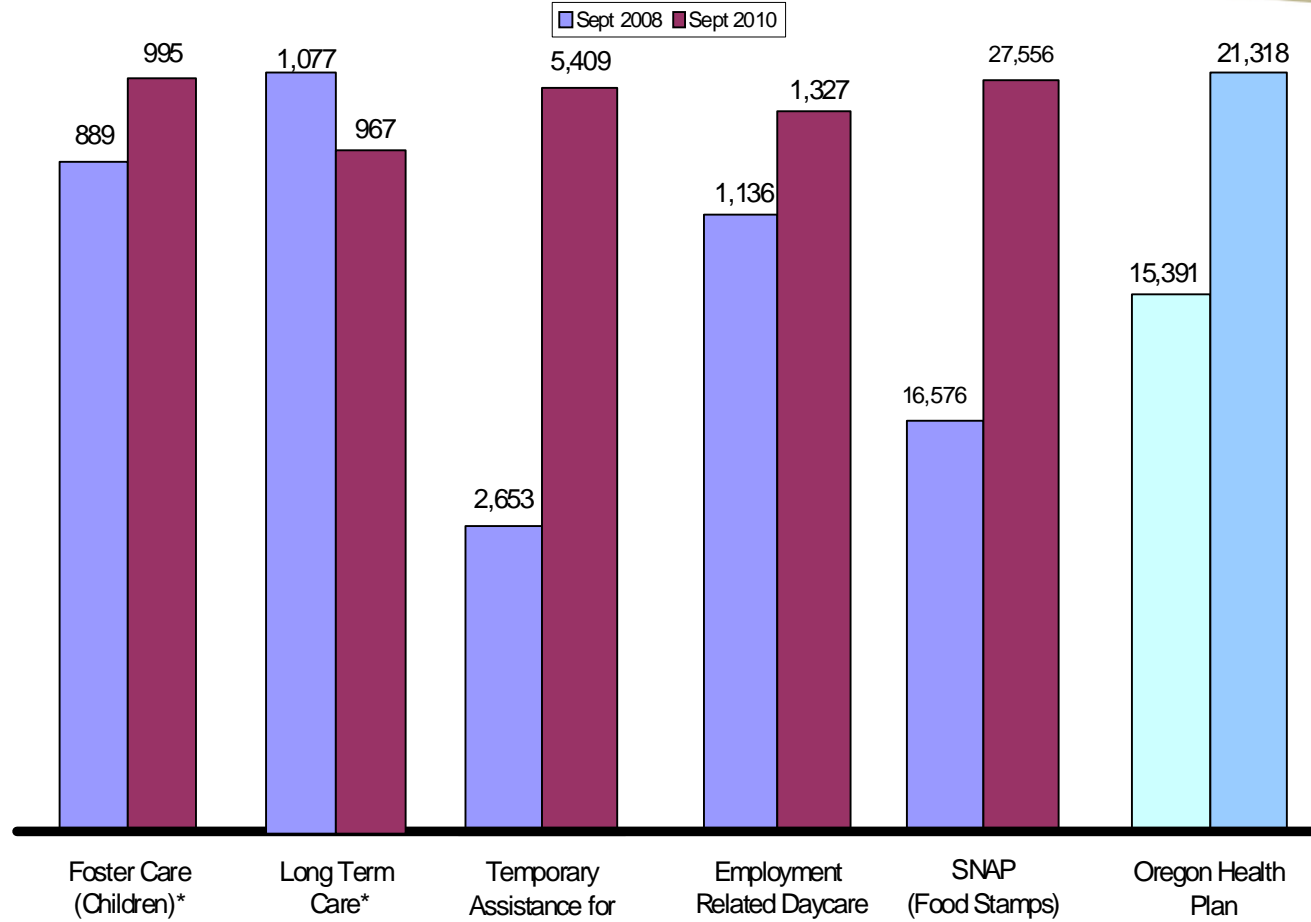
States provided updated boundaries in 2005/2006 as part of Phase 1 of the 2010 Census Redistricting Data Program.

*Child Foster Care compares August 2008 to August 2010. Long Term Care compares April 2008 to April 2010

Oregon Health Authority

DHS Oregon Department of Human Services

DHS & OHA Caseloads



% Change SD 25	11.9%	-10.2%	103.9%	16.8%	66.2%	38.5%
% Change Statewide	3.1%	5.2%	84.6%	-0.3%	48.9%	28.9%

District Demographic Information (from 2000 U.S. Census)										
	AGE				RACE*					
	Total Population	Residents Under 18	Residents Under 5	Residents 65 and Over	White	African American	American Indian	Asian	Other	Hispanic (of any race)
Number	114,857	32,027	9,327	10,317	99,172	3,038	2,294	5,118	10,086	10,533
Percent	100.0%	27.9%	8.1%	9.0%	86.3%	2.6%	2.0%	4.5%	8.8%	9.2%
Statewide Percent		24.7%	6.5%	12.9%	89.2%	2.2%	2.6%	3.6%	5.7%	8.2%

*Total for race may exceed 100% - Includes double-counts for those who indicated more than one race

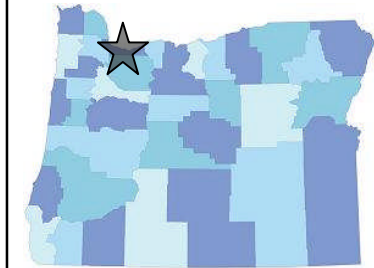
Source: U.S. Census Bureau, State Legislative District Summary File

States provided updated boundaries in 2005/2006 as part of Phase 1 of the 2010 Census Redistricting Data Program.

*Child Foster Care compares August 2008 to August 2010. Long Term Care compares April 2008 to April 2010

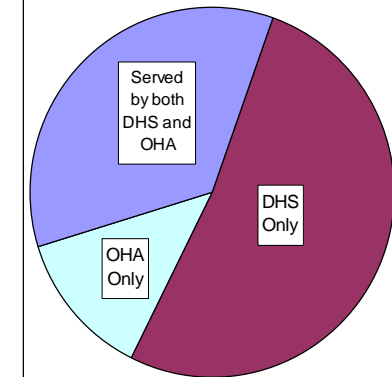
Senate District 25

Senator Laurie Monnes Anderson



All Eligibility Determinations are Performed by DHS

51% of district clients receive services from both DHS and OHA

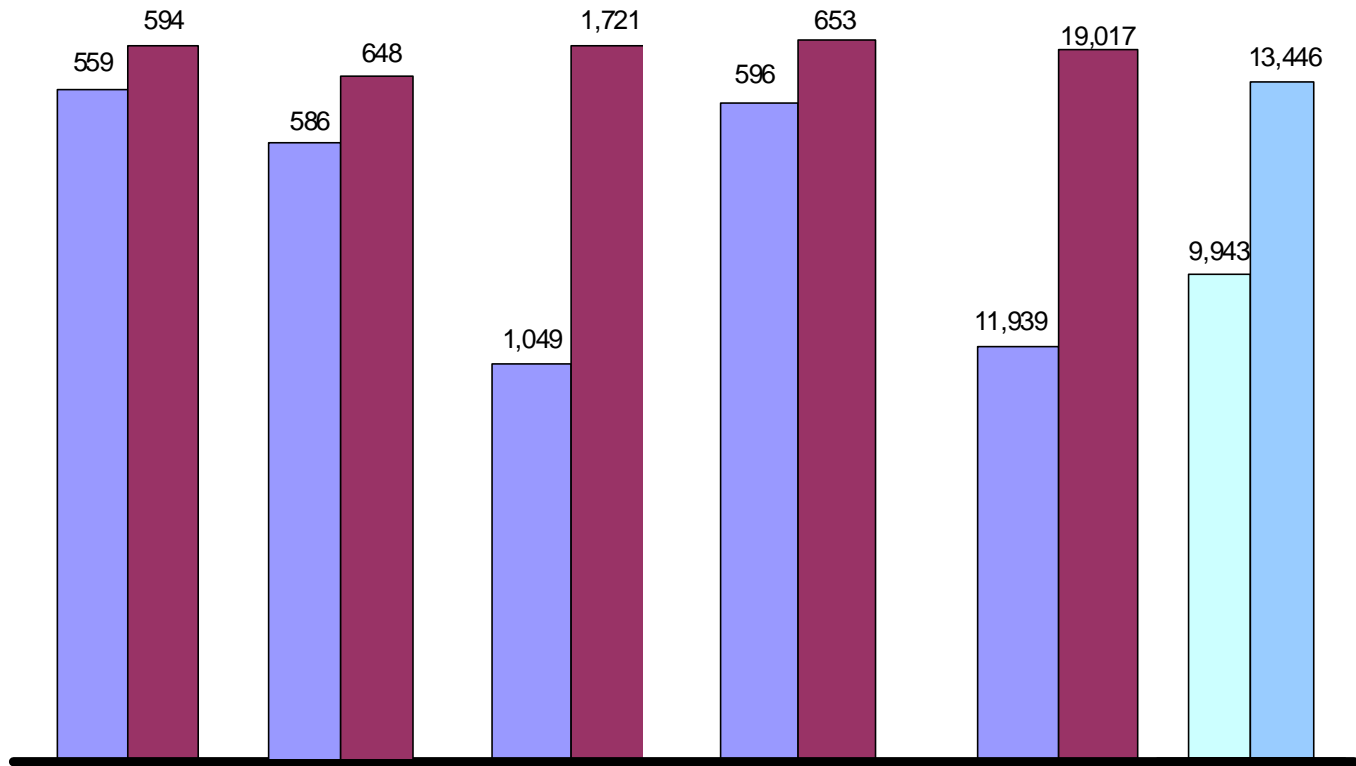


Oregon Health Authority

DHS Oregon Department of Human Services

DHS & OHA Caseloads

■ Sept 2008 ■ Sept 2010



% Change SD 26

Service	% Change SD 26
Foster Care (Children)*	6.3%
Long Term Care*	10.6%
Temporary Assistance for Needy Families	64.1%
Employment Related Daycare	9.6%
SNAP (Food Stamps)	59.3%
Oregon Health Plan	35.2%

% Change Statewide

Service	% Change Statewide
Foster Care (Children)*	3.1%
Long Term Care*	5.2%
Temporary Assistance for Needy Families	84.6%
Employment Related Daycare	-0.3%
SNAP (Food Stamps)	48.9%
Oregon Health Plan	28.9%

District Demographic Information (from 2000 U.S. Census)										
	AGE				RACE*					
	Total Population	Residents Under 18	Residents Under 5	Residents 65 and Over	White	African American	American Indian	Asian	Other	Hispanic (of any race)
Number	113,405	29,449	7,147	11,792	102,849	1,190	2,105	3,627	6,770	8,062
Percent	100.0%	26.0%	6.3%	10.4%	90.7%	1.0%	1.9%	3.2%	6.0%	7.1%
Statewide Percent		24.7%	6.5%	12.9%	89.2%	2.2%	2.6%	3.6%	5.7%	8.2%

*Total for race may exceed 100% - Includes double-counts for those who indicated more than one race

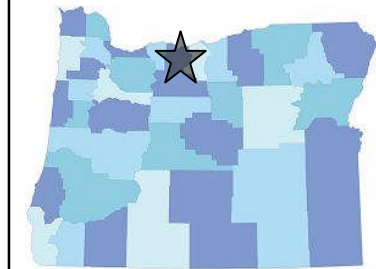
Source: U.S. Census Bureau, State Legislative District Summary File

States provided updated boundaries in 2005/2006 as part of Phase 1 of the 2010 Census Redistricting Data Program.

*Child Foster Care compares August 2008 to August 2010. Long Term Care compares April 2008 to April 2010

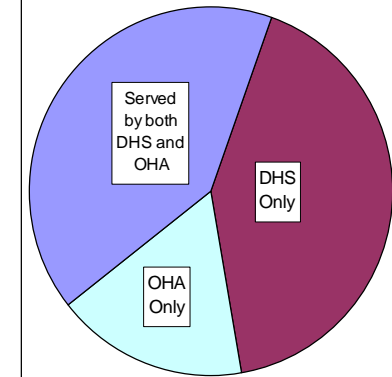
Senate District 26

Senator
Chuck Thomsen



All Eligibility Determinations are Performed by DHS

41% of district clients receive services from both DHS and OHA

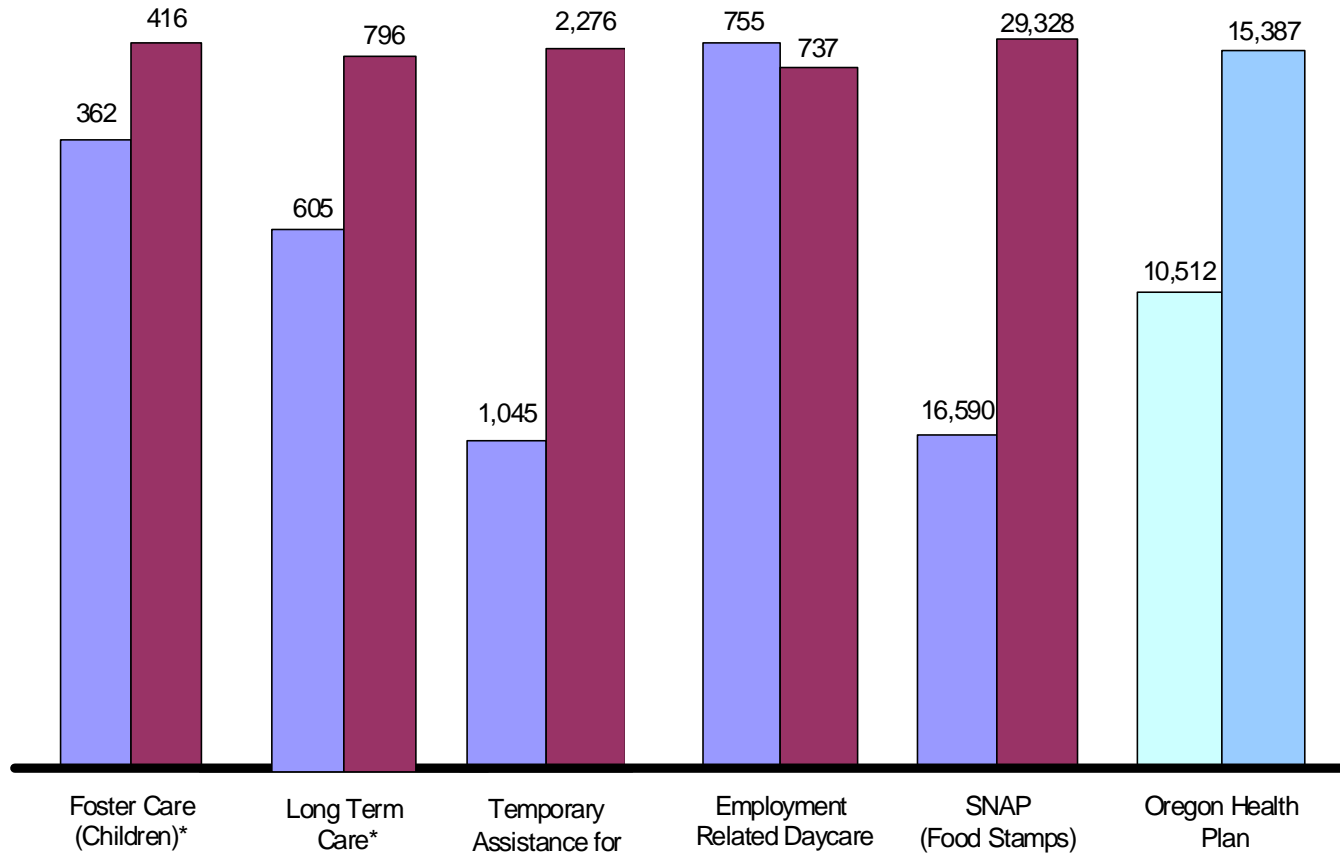


Oregon Health Authority

DHS
Oregon Department of Human Services

DHS & OHA Caseloads

■ Sept 2008 ■ Sept 2010



	Foster Care (Children)*	Long Term Care*	Temporary Assistance for Needy Families	Employment Related Daycare	SNAP (Food Stamps)	Oregon Health Plan
% Change SD 27	14.9%	31.6%	117.8%	-2.4%	76.8%	46.4%
% Change Statewide	3.1%	5.2%	84.6%	-0.3%	48.9%	28.9%

District Demographic Information (from 2000 U.S. Census)										
	AGE				RACE*					
	Total Population	Residents Under 18	Residents Under 5	Residents 65 and Over	White	African American	American Indian	Asian	Other	Hispanic (of any race)
Number	113,606	28,219	7,005	14,771	109,846	441	2,042	1,360	2,332	3,103
Percent	100.0%	24.8%	6.2%	13.0%	96.7%	0.4%	1.8%	1.2%	2.0%	2.7%
Statewide Percent		24.7%	6.5%	12.9%	89.2%	2.2%	2.6%	3.6%	5.7%	8.2%

*Total for race may exceed 100% - Includes double-counts for those who indicated more than one race

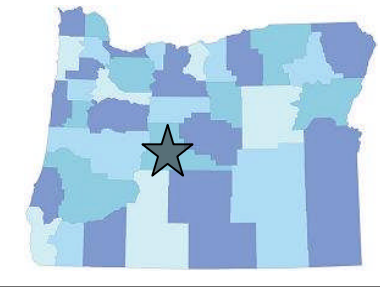
Source: U.S. Census Bureau, State Legislative District Summary File

States provided updated boundaries in 2005/2006 as part of Phase 1 of the 2010 Census Redistricting Data Program.

*Child Foster Care compares August 2008 to August 2010. Long Term Care compares April 2008 to April 2010

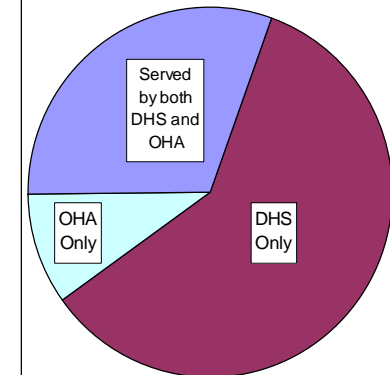
Senate District 27

Senator
Chris Telfer



All Eligibility Determinations are Performed by DHS

37% of district clients receive services from both DHS and OHA



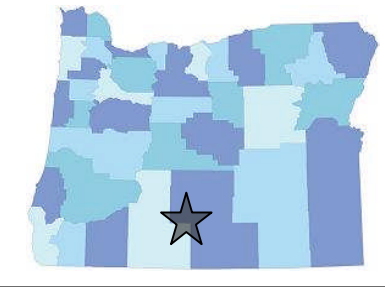
Oregon Health Authority

DHS
Oregon Department of Human Services

DHS & OHA Caseloads

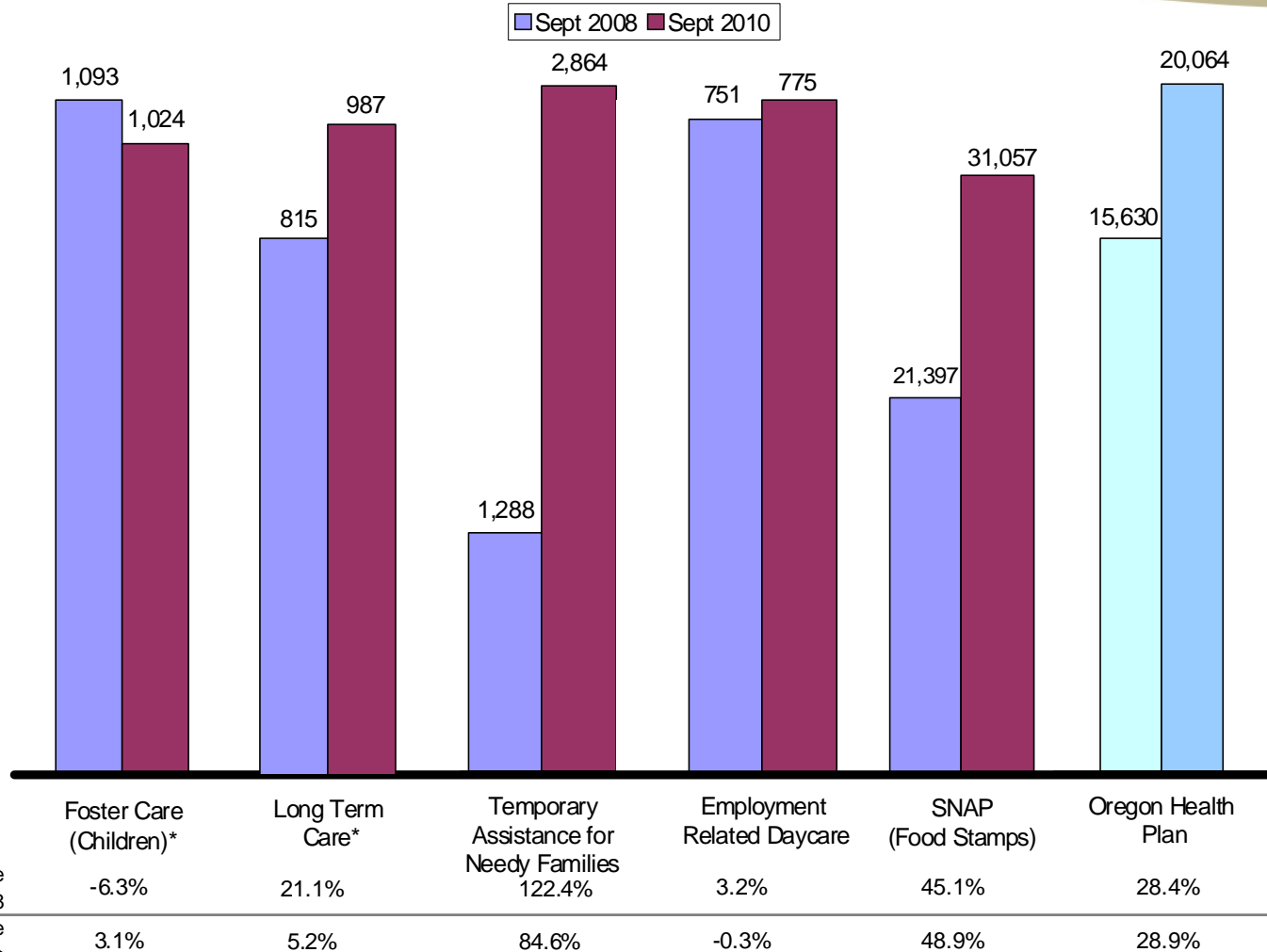
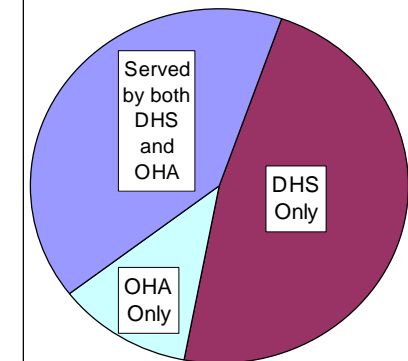
Senate District 28

Senator
Doug Whitsett



All Eligibility Determinations
are Performed by DHS

41% of district clients
receive services from both
DHS and OHA



District Demographic Information (from 2000 U.S. Census)										
	AGE				RACE*					
	Total Population	Residents Under 18	Residents Under 5	Residents 65 and Over	White	African American	American Indian	Asian	Other	Hispanic (of any race)
Number	114,550	30,008	7,277	16,621	105,678	844	5,336	1,201	5,054	6,583
Percent	100.0%	26.2%	6.4%	14.5%	92.3%	0.7%	4.7%	1.0%	4.4%	5.7%
Statewide Percent		24.7%	6.5%	12.9%	89.2%	2.2%	2.6%	3.6%	5.7%	8.2%

*Total for race may exceed 100% - Includes double-counts for those who indicated more than one race

Source: U.S. Census Bureau, State Legislative District Summary File

States provided updated boundaries in 2005/2006 as part of Phase 1 of the 2010 Census Redistricting Data Program.

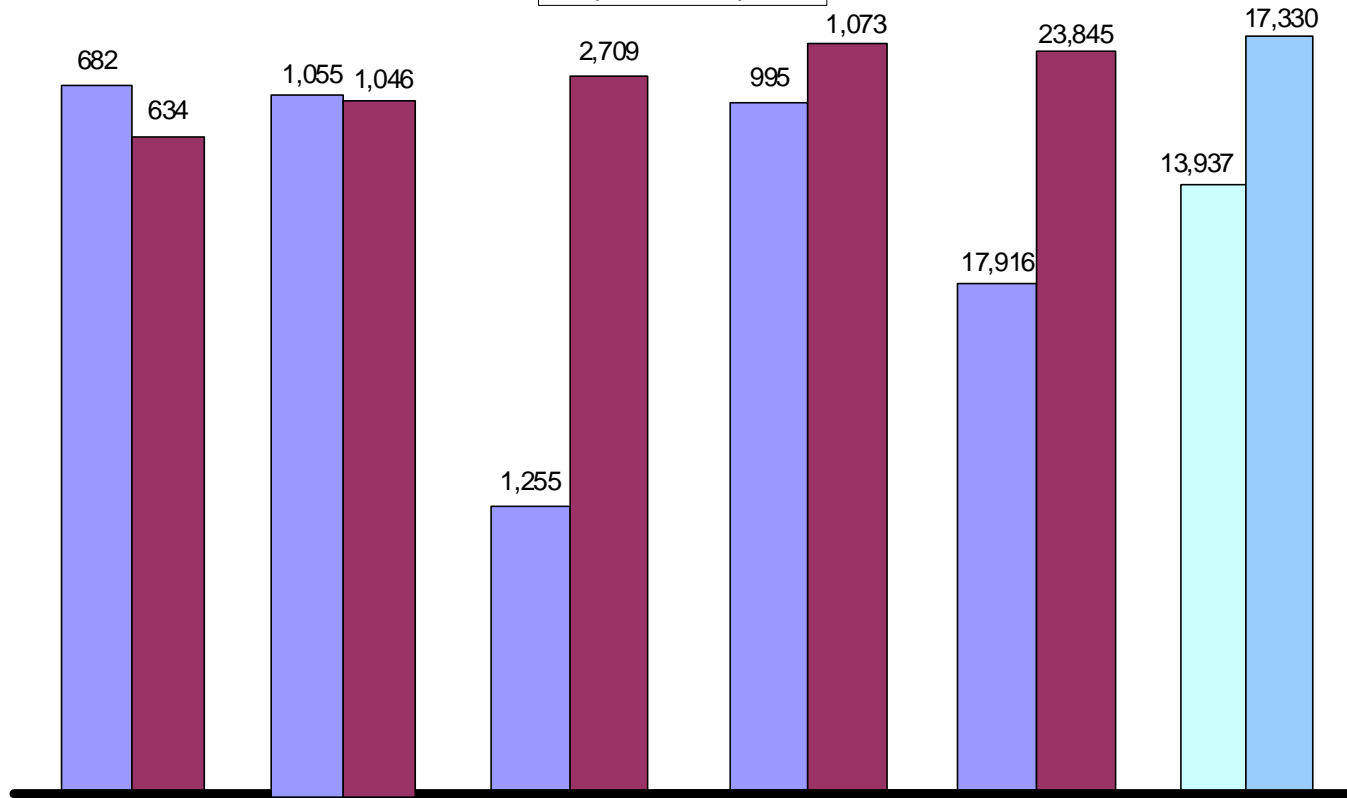
*Child Foster Care compares August 2008 to August 2010. Long Term Care compares April 2008 to April 2010

Oregon
Health
Authority

DHS
Oregon Department
of Human Services

DHS & OHA Caseloads

■ Sept 2008 ■ Sept 2010



% Change SD 29

Service	% Change SD 29	% Change Statewide
Foster Care (Children)*	-7.0%	3.1%
Long Term Care*	-0.9%	5.2%
Temporary Assistance for Needy Families	115.9%	84.6%
Employment Related Daycare	7.8%	-0.3%
SNAP (Food Stamps)	33.1%	48.9%
Oregon Health Plan	24.3%	28.9%

% Change Statewide

District Demographic Information (from 2000 U.S. Census)										
	AGE				RACE*					
	Total Population	Residents Under 18	Residents Under 5	Residents 65 and Over	White	African American	American Indian	Asian	Other	Hispanic (of any race)
Number	113,299	30,778	8,041	14,829	98,437	1,003	3,764	1,134	11,399	12,447
Percent	100.0%	27.2%	7.1%	13.1%	86.9%	0.9%	3.3%	1.0%	10.1%	11.0%
Statewide Percent		24.7%	6.5%	12.9%	89.2%	2.2%	2.6%	3.6%	5.7%	8.2%

*Total for race may exceed 100% - Includes double-counts for those who indicated more than one race

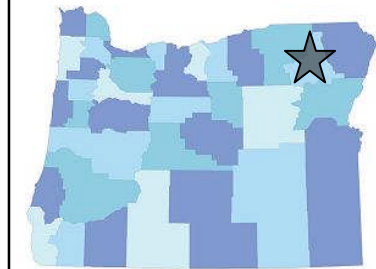
Source: U.S. Census Bureau, State Legislative District Summary File

States provided updated boundaries in 2005/2006 as part of Phase 1 of the 2010 Census Redistricting Data Program.

*Child Foster Care compares August 2008 to August 2010. Long Term Care compares April 2008 to April 2010

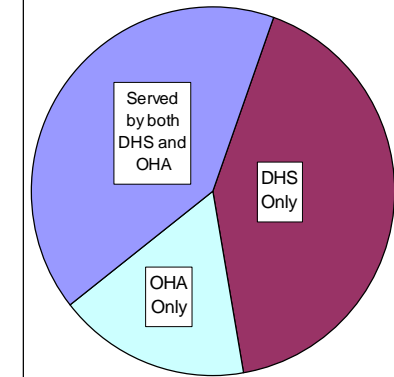
Senate District 29

Senator David Nelson



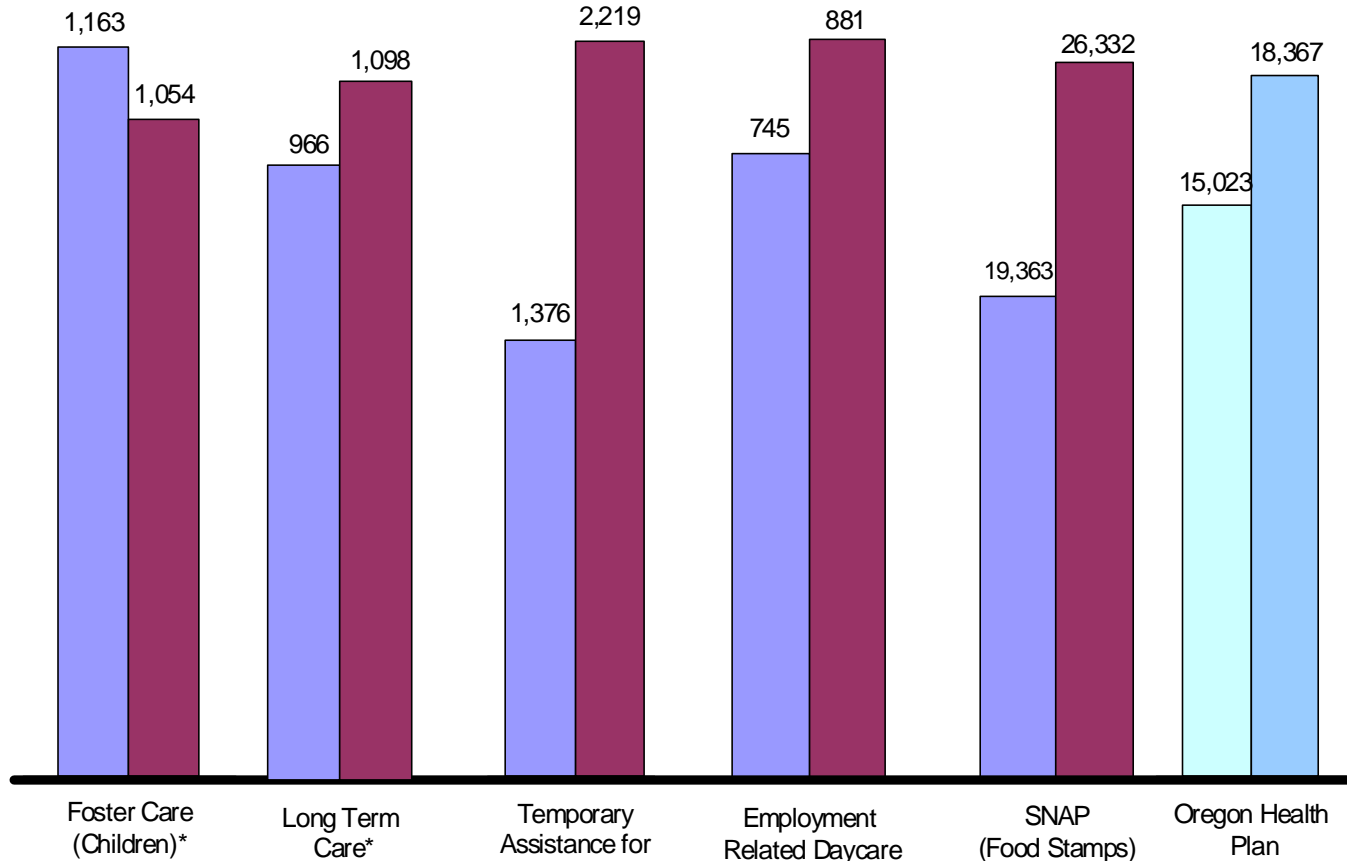
All Eligibility Determinations are Performed by DHS

45% of district clients receive services from both DHS and OHA



DHS & OHA Caseloads

■ Sept 2008 ■ Sept 2010



% Change SD 30	-9.4%	13.7%	61.3%	18.3%	36.0%	22.3%
% Change Statewide	3.1%	5.2%	84.6%	-0.3%	48.9%	28.9%

District Demographic Information (from 2000 U.S. Census)										
AGE					RACE*					
	Total Population	Residents Under 18	Residents Under 5	Residents 65 and Over	White	African American	American Indian	Asian	Other	Hispanic (of any race)
Number	113,415	30,078	7,481	17,666	97,108	791	6,112	1,393	10,793	11,717
Percent	100.0%	26.5%	6.6%	15.6%	85.6%	0.7%	5.4%	1.2%	9.5%	10.3%
Statewide Percent		24.7%	6.5%	12.9%	89.2%	2.2%	2.6%	3.6%	5.7%	8.2%

*Total for race may exceed 100% - Includes double-counts for those who indicated more than one race

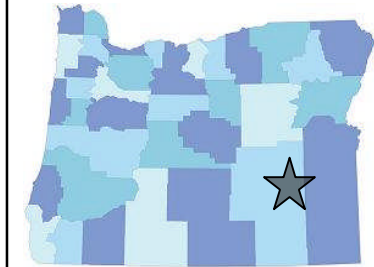
Source: U.S. Census Bureau, State Legislative District Summary File

States provided updated boundaries in 2005/2006 as part of Phase 1 of the 2010 Census Redistricting Data Program.

*Child Foster Care compares August 2008 to August 2010. Long Term Care compares April 2008 to April 2010

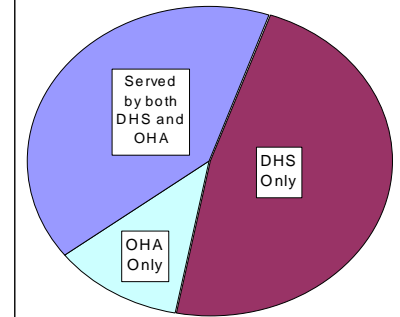
Senate District 30

Senator
Ted Ferrioli



All Eligibility Determinations are Performed by DHS

41% of district clients receive services from both DHS and OHA



Oregon Health Authority

DHS
Oregon Department of Human Services